

#### Q\_5791

Provide written documentation clearly identifying community involvement, as described elsewhere in this application. *In addition to a formally adopted plan (prior questions), community involvement can be documented by mechanisms such as: an official resolution by the governing body of the applicant, approving and/or endorsing the project and affirming public and community support for it; public outreach plan; press releases/announcements; fundraising campaign plans; reports of public participation, public meetings, and/or events; official project endorsements, partnerships and letters of support. Rating points cannot be assigned unless documentation of community involvement is submitted.*

#### A\_5791

Attached is written documentation identifying community involvement including:

1. Official resolution by the Town of Claverack Town Board approving and endorsing the Shaw Bridge restoration project and affirming public and community support for the project, signed by Supervisor Clifford "Kippy" Weigelt (see page 5).
2. Transmittal letter by the Town Clerk.
3. Public outreach plan
  - As outlined in the proposal to the Preservation League two years ago, the CHPAC will pursue the following public outreach plan:
    - Lecture (and fundraising) gathering at Union College; intended for Whipple family members, historians, and bridge enthusiasts and sponsored by Union College and the Whipple Website (Whipple.org).
    - Lecture (and fundraising) gathering at RPI; intended for civil engineers and bridge enthusiasts and sponsored by RPI, American Society of Civil Engineers, and/or other engineering organizations.
    - Lecture (and fundraising) gathering on Van Wyck Lane near the Shaw Bridge at the Jacob P. Mesick House (listed on the National Register); intended for Claverack neighbors and sponsored by Van Wyck Lane homeowners.
    - Lecture (and fundraising) gathering at the new A. B. Shaw Firehouse; intended for and sponsored by the firemen.
  - The first of these meetings was held at the new A. B. Shaw Firehouse on Sunday September 30, 2012 (see 4 below).
  - With Dr. Francis Griggs as the Project Supervisor, who has many hundreds of contacts with academia (Union College and RPI) and contacts with numerous private sector businesses throughout the Capital Region, other outreach activities are also possible. (See attachment to Q\_3432 "1869 Whipple Bridge Back across Enlarged Erie Canal.")
4. Press releases and announcements
  - After the Town of Claverack applied to the Preservation League to fund a Shaw Bridge Historic Structure Report on April 7, 2012, the Register-Star published a front page article (see pages 7 and 8)
  - The press release for the September 30, 2012 meeting, mentioned above, at the new A. B. Shaw Firehouse is attached on page 9 and notices were published in the local newspapers the Register-Star (page 10) and The Columbia Paper (page 11).
  - When the Preservation League announced the award of \$8,400 to the Town of Claverack, the Associated Press release was picked up by the following news media (in alphabetical order): Daily Journal, Franklin, Indiana (page 12); Newsday, Long Island, (page 13); SFGate, Website Sister-site of the San Francisco Chronicle (page 14); Times Union, Albany (page 15); Wall Street Journal, New York (page 16); WCAX.com, Burlington VT (page 17); WNYT, Albany (page 18)
  - The Associated Press release was then expanded in the following local news media:
    - Register-Star, Hudson (pages 19 and 20)
    - Gossips of Rivertown, Hudson (page 21)
    - WGXC, Hudson (page 22)
    - Times Union, Albany (pages 23 and 24)
5. Fundraising campaign plans

The primary fundraising campaign plan for this year is this Consolidated Funding Application.

Claverack also intended to apply for a grant from the Transportation Alternative Program but it appeared that this year, unlike previous years, did not have a slot for the restoration of historic bridges. It may be possible to apply next year. The Claverack Town Historian, Jeane LaPorta, has also had preliminary favorable responses for small grants from the following foundations: Hudson River Foundation, Abatecola Foundation, and Berkshire Foundation. Other potential sources including the Hart Family Fund for Small Towns are being researched. As mentioned in 3 above, there will also be public outreach fundraising events but they are primarily educational in nature, at this stage. It should be mentioned again that Dr. Francis Griggs, the Project Supervisor for the Shaw Bridge Restoration, has shown a remarkable ability to secure in-kind services and materials. (See attachment to Q\_3432 "1869 Whipple Bridge Back across Enlarged Erie Canal.")

6. Reports of public participation

Public participation can be measured by the petition to "Help Preserve the Landmark Shaw Bridge in Claverack NY" (see pages 25 through 36) directed at the Preservation League Grant Reviewers for the Preserve New York grant application in 2012. As shown by the comments in this petition, the Shaw Bridge has important sentimental, esthetic, and irreplaceable significance to more than 550 signers of this petition. Comments from the local community include:

- "Squire Whipple was the author of two highly influential books: *A Work on Bridge Building* and *An elementary and practical treatise on bridge building* that form the foundation of civil engineering in the United States. It is fitting that we should preserve the only known example of a Whipple double-span bowstring truss bridge at its original location on the historic Albany Post Road."
- "The bridges of Columbia County are bridges to our history, and the Shaw Bridge is the most historic of all."
- "Once a structure like this is gone, it can't be restored."
- "This is the only one of its kind."
- "It is the last of the magnificent Whipple bridges."
- "We should be very proud of our little gem and make sure it is restored and maintained."
- "The Shaw Bridge is a long time family favorite. When our children were young we would go several miles out of our way to drive over the bridge. They christened it 'Creaky Bridge.' I have been checking on it every few years and have been saddened by the deterioration."
- "A community treasure and should be made available for everyone to use."
- "Saving Shaw Bridge is so important in preserving Claverack's rich historic past. As a resident of Claverack I consider myself very fortunate to have such a rare and unique bridge in our town. Please remember, if this bridge is demolished which is irreversible, the history and culture that is attached to this structure will also be lost."
- "I grew up next to the bridge and still live on that road. Many memories there, hanging out on and under the bridge, the slow roll of the planks when a car went over it, how the creek would make two channels after the spring floods. I could go on forever. A large part of my childhood was spent there. We always knew it was historically significant but now it has been neglected. This is a good effort to bring it back."
- "The bridge restoration project is of great historic significance for the town and the county. It will continue to have an impact for our children and their children."
- "We must preserve structures that link us to the past and preserve our rural landscape."
- "Recognizing and preserving this bridge and its design helps more people understand the links between past and present."
- "The bridge in and of itself is beautiful, or would be once the traffic safety additions have been removed, and the bridge is restored. It can only enhance the area, and add to its attractions."
- "I think it would be nice to preserve one of Claverack's Landmarks. It has a very nice setting over the Claverack Creek."
- "Finally... that little gem will awaken and will be polished to SHINE once again!"
- "How can we just stand by and let this historic bridge go to ruin?"
- "An item of such historical importance needs attention. When it is gone, it is gone forever."
- "Instead of being barricaded, cutting a neighborhood apart, it should be opened up. Even if only for walking and bikes, this beautiful bridge allows neighbors to visit or walk to the restaurant. It ties a community together when functioning."

- “Preserve history and provide a new experience to our residents and to encourage visitors to our hamlet.”
- “Preserve this architecturally/historically important structure.”
- “I walked & rode my bike over the bridge many times in the late 30s, early 40s.”
- “As the only known Whipple twin-span bowstring in the world, it would be a shame – no, CRIME, really – to NOT properly restore this bridge. It is a living piece of history, from a time when America’s technical, engineering, and manufacturing prowess were just starting to bloom – and Squire Whipple was at the forefront.”
- Comments from outside our area include:
  - “As a retired civil engineer I can appreciate the need to retain & restore historic bridge structures – in the case of the Shaw Bridge, it appears unique, & unquestionably should be maintained.” [Australia]
  - Signed by Whipple relatives and descendants [Alabama, Arizona, California, Missouri, Florida, Georgia, Minnesota, Oregon, Utah.]
  - “We lost an important bridge here in NH (listed on the National Trust for Historic Preservation Most Endangered Landmarks) because the problems were not addressed as soon as they should have been. It is my hope that we will not lose this important bridge for the same reason.” [New Hampshire]
  - “Industrial archaeology and the community of Claverack would lose an irreplaceable example of native craftsmanship if this bridge were to deteriorate further.” [Pennsylvania]
  - “HistoricBridges.org strongly supports the preservation and in-kind restoration of this nationally significant historic bridge.” [Michigan]

#### 7. Public meetings and events

- The first major event concerning the Shaw Bridge was on September 6, 1980 when there was a ceremony to mark the Shaw Bridge listing on the National Register of Historic Places. This is documented in the following newspaper articles:
  - Invitation to Ceremony (page 37)
  - August 1980, Register-Star article with photo and headline: “Bridge ceremony planned,” to be held September 6, to mark the Shaw Bridge’s listing on the National Register of Historic Places (page 38).
  - August 20, 1980 Newspaper article with headline: “Ceremony to mark Shaw Bridge national listing.” Among the activities: free brochures giving the history of the bridge and a parade of antique cars and carriages 1870-1930 (page 39).
  - August 1980 Newspaper article with headline: “Antique car parade slated for Shaw Bridge ceremony” and photo of 1923 Ford Runabout Model T (page 40).
  - September, 1980 Register-Star article with headline: “Ceremony marks Shaw Bridge listing.” The article describes a parade across the bridge led by a horse drawn buckboard, followed by a 1922 Essex Speedster, a 1923 Studebaker, 1924 Ford, 1922 White truck, a 1929 Ford truck, and a 1930 Ford truck (page 41)
- The most prominent recent public event was the “Meet the Experts” meeting on Sunday, September 30, 2012 at the new A. B. Shaw Firehouse. At that presentation, Whipple Bridge experts Dr. Francis Griggs and John Testa discussed the relocation of the Johnstown Whipple Bridge to the Union College campus at the time when John was a student (who wrote the study documenting the relocation in which he was deeply involved) and Dr. Griggs was the professor. Dr. Griggs is in the final stages of writing a biography of Squire Whipple. More than 50 people attended this very successful event. See 4 above, the press release on page 9, and notices that were published in the local newspapers Register-Star (page 10) and The Columbia Paper (page 11).
- An early CHPAC event relating to the Shaw Bridge was a Claverack Hamlet walking tour on Saturday May 14, 2011, in which the Shaw Bridge was a prominent stopover. Before the event, Ian Stewart of CHPAC was interviewed by the Hudson radio station WGXC.
- The Shaw Bridge is discussed at almost every monthly public meeting of the Claverack Town Board where the CHPAC submits a monthly report. Page 42 provides an example of one such monthly report.

8. Official project endorsements, partnerships and letters of support
  - Congressman, Chris Gibson (page 43)
  - New York State Member of Assembly, Didi Barrett (page 44)
  - Columbia Land Conservancy Executive Director, Peter Paden (page 45)
  - Columbia County Commissioner of Public Works, David Robinson, PE (page 46)
  - ReEntry Columbia, Program Director, Carolyn, Polikarpus (page 47)
  - Greater Hudson Promise Neighborhood, Director, Joan Hunt (page 48)
  - New York Canal Corporation Director, Brian Stratton (page 49)



**TOWN OF CLAVERACK**

**Resolution No. #39 of 2014**

**Proceed with Consolidated Fund Grant Application  
For Shaw Bridge**

**June 12, 2014**

At the Regular Monthly Meeting of the Town Board of the Town of Claverack, Columbia County, New York, duly called and held at the Town Hall, 836 Rte. #217, Mellenville, New York, the following resolution was proposed and seconded:

Resolution by: Kathleen Cashen \_\_\_\_\_;

Seconded by: Brian Keeler \_\_\_\_\_;

**BE IT RESOLVED** that the Town Board of the Town of Claverack:

Agrees to proceed with the New York State Consolidated Fund Application for a Grant for the Shaw Bridge.

The following Town Board members voted "Aye" in favor of said resolution:

Clifford Weigelt	Supervisor
Kathleen Cashen	Councilwoman
Brian Keeler	Councilman

The following Town Board member voted "No" in opposition to said resolution:

Stephen Hook	Councilman
--------------	------------

The following Town Board member was absent from the meeting:

William Gerlach	Councilman
-----------------	------------

The Resolution having been approved by a majority of the Town Board, the same was duly declared adopted by the Supervisor.

*Mary J. Shoen*  
Town Clerk

CLAVRACK, NEW YORK



**TOWN OF CLAVERACK**

Post Office Box V/ 91 Church Street  
Mellenville, New York 12544-0111  
Phone: 518.672.7911 / Fax: 518.672.4821  
[www.townofclaverack.com](http://www.townofclaverack.com)

June 12, 2014

Danielle Dwyer  
Regional Grant Administrator for the Capital Region  
Office of Parks, Recreation & Historic Preservation  
Saratoga Spa State Park  
19 Roosevelt Drive  
Saratoga Springs, NY 12866-6214

Dear Danielle,

The Town of Claverack enthusiastically supports the town's Consolidated Funding Application (CFA) for funds to restore the 1870 Shaw Bridge in the Town of Claverack. This bridge is one of the historic landmarks within the town and our Historical Advisory Committee has worked very hard to document the historical importance of this bridge as well as its potential recreational and tourist attraction of the people of Claverack and out-of-town visitors.

The restoration of the Shaw Bridge as a pedestrian bridge also supports the goals and objectives of our town's comprehensive town in preserving and celebrating our town's historic heritage and important locations within the town.

The Shaw Bridge is described in the National Register of Historic Places as "a structure of outstanding importance to the history of American engineering and transportation technology." There is significant interest and support for the restoration of this bridge from a broad cross-section of citizens of the town, including the homeowners who live closest to the bridge. The Town of Claverack has already helped in the clean-up of vegetation on the bridge and we are willing to work with the interested parties and citizens in future efforts to restore the Shaw Bridge as a historic site within the town. Approval of funds for this project will set into place a community effort to make the bridge a pedestrian walkway and a Columbia County tourist attraction.

Your support for this project will ensure that future generations will be able to enjoy the elegant beauty of this unique engineering piece of art.

Thank you for your consideration of this worthy and important proposal.

Sincerely,

*Clifford Weigelt*

Clifford Weigelt  
Supervisor


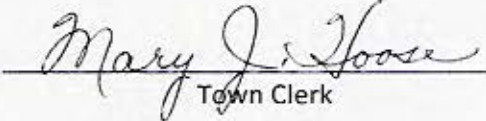


## **TOWN OF CLAVERACK**

**Post Office Box V  
91 Church Street  
Mellenville, New York 12544-0111  
Phone: 518.672.7911  
Fax: 518.672.4821**

I, Mary J. Hoose, Town Clerk for the Town of Claverack, Columbia County, New York, do hereby certify that the following resolution was adopted at a regular meeting of the Town Board, held on June 12, 2014, and is on file and of record, and that said resolution has not been altered, amended or revoked and is in full force and effect.

Dated: June 13, 2014

  
  
Town Clerk



**CLAVERACK**



Nathan Mayberg/Hudson-Catskill Newspapers

The town of Claverack has applied for a state grant to hire an engineering consultant who would advise the town on how to restore the historic 1870 Shaw Bridge on Van Wyck Lane over Claverack Creek. This bridge has been closed off due to the poor condition of its wooden platform.

## The Shaw Bridge redemption

Town moves to preserve historic span, believed to be the only one of its kind in the country

By **Nathan Mayberg**  
Hudson-Catskill Newspapers

With its distinct iron arches and its crumbling wooden deck, the Shaw Bridge over Claverack Creek is instantly striking for its design, obvious aging and location in the middle of a scenic site.

The town of Claverack has submitted a grant application to the state Historic Preservation Fund in an effort to move

forward in preserving the historic 1870 bridge on Van Wyck Lane over Claverack Creek.

The bridge, which has been closed due to the poor condition of its wooden deck, is listed on the National Register of Historic Places. The bridge was designed by J.D. Hutchinson of Troy, based on the formula outlined by the important bridge pioneer Squire Whipple. Hutchinson's name, along

with the date the bridge was completed, is engraved on the iron arch. According to petitions being circulated to preserve the structure, the Shaw Bridge is the only existing extant double-span Whipple bowstring truss bridge in the country.

Claverack Supervisor Robin Andrews said the town has applied for a grant in order to hire an engineering consultant to determine what is

required to save the bridge, and offer up plans for the town to consider. Andrews said the town hopes to gain volunteers and donations of supplies to help rebuild the wooden deck and repair the structure.

The plan at this point is to concentrate on preserving the wooden deck and opening up the bridge strictly to pedestrian traffic. A barrier would be

Please see Shaw, page A11



# Shaw

Continued from page A1

placed to prevent vehicle traffic. Currently, a fence prevents people from crossing the bridge, which has massive holes in spots where wooden panels were once placed.

Charles Schram, 58, has lived on Van Wyck Lane nearly his entire life. He used to live right next to the bridge on the spacious Benson Farm, though he currently lives further up the street.

"I have a lot of memories by the bridge," said Schram. "It will be a nice thing to walk over it (again)," he stated. Schram said he was glad the bridge wouldn't be restored to handle car traffic, as he doesn't think it is able to handle such weight. The bridge was known for having survived a hurricane, as well as other major storms in the past, where other bridges had washed out.

Schram said that kids in his

neighborhood liked to "go to hang out on the bridge ... it was a great meeting spot."

Alice Hallenbeck, who lives nearby on Brookbound Lane, said "I think it would be great if it could be saved." She said her children and grandchildren used to love to walk over the bridge and throw stones into the water. "It's a historic bridge."

The Claverack Historic Advisory Committee has identified the bridge as its top preservation priority. An online petition posted by committee member Ian Nitschke's petition further states that the town may need to fundraise and apply for additional grants to pay for the restoration. Andrews said the committee is also seeking new members. Interested parties may contact Russell Pomeranz at [Repomeranz@gmail.com](mailto:Repomeranz@gmail.com).

FOR IMMEDIATE RELEASE

September 25, 2012

Contact: Ian Nitschke

[Ian.Nitschke@mac.com](mailto:Ian.Nitschke@mac.com)

518-851-7936

### Meet the Experts and Learn about Restoring Claverack's Famous Shaw Bridge

The Claverack Historic Preservation Committee will sponsor a discussion by Dr. Francis Griggs, Jr., distinguished historic bridge expert, and John Testa, retired Civil Engineer, at the new A. B. Shaw Firehouse, September 30, 2012, 3:00 PM, on the importance of restoring the renowned Shaw Bridge, now closed to all traffic.

- The Shaw Bridge, which crosses the Claverack Creek on Van Wyck Lane, is "a structure of outstanding importance to the history of American engineering and transportation technology," according to the National Register statement of significance.
- The Shaw Bridge closely follows the bowstring truss design patented in 1841 by 1830 Union College graduate, Squire Whipple (1801-88), recognized worldwide as the person who first correctly analyzed the stresses in a truss and put those ideas into print in his revolutionary 1847 book *A Work on Bridge Building*. The book shows how to scientifically design safe, economical, and durable bridges. Recognized as the father of iron bridge building in America, his bowstring truss was the first successful iron bridge design in America, and his book has had a profound influence on the history of American Civil Engineering.
- After the New York State Canal Board adopted Whipple's 1841 bowstring truss patent as the standard design, hundreds of Whipple's design trusses were constructed over the Erie Canal and elsewhere. Today, only a handful of Whipple bowstring truss bridges remain.
- The Shaw Bridge was manufactured in 1870, by John D. Hutchinson of Troy NY whose father, John Hutchinson built 35 Whipple patent bridges over New York State canals in the 1850's.
- The Shaw Bridge is in its original location when it carried the historic New York to Albany Post Road (now Van Wyck Lane) over the Claverack Creek. (Very few, if any, Whipple bowstring truss bridges are known to be in their *original* location).
- The Shaw Bridge is the only known *double span* Whipple bowstring truss bridge.
- In a 1996 article *Context for World Heritage Bridges*, for the International Council on Monuments and Sites (ICOMOS) and The International Committee for the Conservation of the Industrial Heritage (TICCIH), bridge expert Eric DeLony listed only five potential world heritage bridges for New York State: (1) 1883 Brooklyn Bridge, (2) 1860 Central Park Cast-Iron Arches, (3) 1917 Hell Gate Bridge, (4) 1886 Poughkeepsie Cantilever Bridge, and (5) 1867 Normanskill Whipple Bowstring Truss Bridge (similar to the Shaw Bridge but with only one span and not in its original location).

Dr. Griggs, a Distinguished Member of American Society of Civil Engineers (Dist.M.ASCE), has written extensively about Squire Whipple, has been responsible for restoring four Whipple bowstring truss bridges (including the Johnstown/Union College bridge, below), and will provide expert guidance on the restoration of the Shaw Bridge as a pedestrian walkway. John Testa, when he was a engineering student at Union College, wrote the study that led to the dismantling of a similar (less intact, one span) Whipple bowstring truss bridge in Johnstown NY and the reconstruction of the bridge on the Union College campus, which was dedicated as a National Historic Civil Engineering Landmark on June 12, 1982.

All are welcome at the A.B. Shaw Firehouse, 67 State Route 23, Claverack, 12513, on Sunday September 30, 2012; 3:00 PM. Light refreshments will be served. For more information contact Ian Nitschke 518-851-7936.

## **Experts will discuss old Shaw Bridge**

Register-Star, Thursday, September 27, 2012

CLAVERRACK -- The Claverack Historic Preservation Committee will sponsor a discussion by Dr. Francis Griggs, Jr., distinguished historic bridge expert, and John Testa, retired civil engineer, at the new A. B. Shaw Firehouse at 3:00 p.m. Sunday. Griggs and Testa will talk about the importance of restoring the renowned Shaw Bridge, now closed to all traffic.

The Shaw Bridge, which crosses the Claverack Creek on Van Wyck Lane, is "a structure of outstanding importance to the history of American engineering and transportation technology," according to the National Register statement of significance.

The bridge closely follows the bowstring truss design patented in 1841 by 1830 Union College graduate, Squire Whipple (1801-88), recognized worldwide as the person who first correctly analyzed the stresses in a truss and put those ideas into print in his revolutionary 1847 book "A Work on Bridge Building." The book shows how to scientifically design safe, economical, and durable bridges. Recognized as the father of iron bridge building in America, his bowstring truss was the first successful iron bridge design in America, and his book has had a profound influence on the history of American Civil Engineering.

After the New York State Canal Board adopted Whipple's 1841 bowstring truss patent as the standard design, hundreds of Whipple's design trusses were constructed over the Erie Canal and elsewhere. Today, only a handful of Whipple bowstring truss bridges remain.

The Shaw Bridge was manufactured in 1870, by John D. Hutchinson of Troy NY whose father, John Hutchinson built 35 Whipple patent bridges over New York State canals in the 1850s. The bridge is in its original location when it carried the historic New York to Albany Post Road (now Van Wyck Lane) over the Claverack Creek. Very few, if any, Whipple bowstring truss bridges are known to be in their original location. Additionally, the Shaw Bridge is the only known double span Whipple bowstring truss bridge.

Griggs has written extensively about Squire Whipple and has been responsible for restoring four Whipple bowstring truss bridges. He will provide expert guidance on the restoration of the Shaw Bridge as a pedestrian walkway.

Testa wrote the study that led to the dismantling of a similar Whipple bowstring truss bridge in Johnstown and the reconstruction of the bridge on the Union College campus, which was dedicated as a National Historic Civil Engineering Landmark on June 12, 1982.

Light refreshments will be served. For more information contact Ian Nitschke 518-851-7936.

## Experts talk about rich history of Claverack's Shaw Bridge

CLAVERACK—The town Historic Preservation Committee will sponsor a discussion by Dr. Francis Griggs, Jr., distinguished historic bridge expert, and John Testa, retired civil engineer speaking about the importance of restoring the Shaw Bridge, now closed to all traffic. The meeting takes place at the new A. R. Shaw Firehouse, 67 State Route 23 east of the Claverack light September 30 at 3 p.m.

The Shaw Bridge, which

crosses the Claverack Creek on Van Wyck Lane, is "a structure of outstanding importance to the history of American engineering and transportation technology," according to the National Register statement of significance.

The release announcing the meeting says that the bridge closely follows the bowstring truss design patented in 1841 by Union College graduate Squire Whipple (1801-88), recognized worldwide as the person who

first correctly analyzed the stresses in a truss and put those ideas into print. His bowstring truss was the first successful iron bridge design in America and influenced the history of American civil engineering. Only a handful of Whipple bowstring truss bridges remain.

The Shaw Bridge was manufactured in 1870, by John D. Hutchinson of Troy. The bridge is in its original location when it carried the historic New York to Albany Post Road (now

Van Wyck Lane) over the Claverack Creek. It is the only known double span Whipple bowstring truss bridge and is one of only five potential world heritage bridges in the state.

Dr. Griggs has written extensively about Squire Whipple, has been responsible for restoring four Whipple bowstring truss bridges and will provide expert guidance on the restoration of the Shaw Bridge as a pedestrian walkway. John Testa, when he was an engineering stu-

dent at Union College, wrote the study that led to the dismantling of a similar Whipple bowstring truss bridge in Johnstown, and the reconstruction of the bridge on the Union College campus, which was dedicated as a National Historic Civil Engineering Landmark on June 12, 1982.

All are welcome. Light refreshments will be served. For more information contact Ian Nitschke 518 851-7936.

**Daily Journal, Franklin, Indiana**

**Preservation League grant will support restoration of historic NY bridge**

THE ASSOCIATED PRESS

First Posted: November 13, 2012 - 3:01 am

Last Updated: November 13, 2012 - 3:02 am

CLAVERACK, N.Y. — The Preservation League of New York state is presenting a grant to support restoration of a historic bridge in the Columbia County town of Claverack.

The league is presenting \$8,400 this morning to support the cost of a historic structure report for the Shaw Bridge in Claverack, 30 miles south of Albany. The bridge, built in 1870, is a double-span Whipple patent bowstring bridge, the only known bridge of its type in New York and perhaps the United States.

The bridge was listed on the National Register of Historic Places in 1980. Its wooden deck has deteriorated to the point where it's not safe even for pedestrians.

The town has been seeking funding to allow the bridge to be restored and reopened to foot traffic.



**Newsday, Long Island NY**

**Preservation League grant aids historic NY bridge**

Published: November 13, 2012 3:02 AM

By The Associated Press

(AP) -- The Preservation League of New York state is presenting a grant to support restoration of a historic bridge in the Columbia County town of Claverack.

The league is presenting \$8,400 this morning to support the cost of a historic structure report for the Shaw Bridge in Claverack, 30 miles south of Albany. The bridge, built in 1870, is a double-span Whipple patent bowstring bridge, the only known bridge of its type in New York and perhaps the United States.

The bridge was listed on the National Register of Historic Places in 1980. Its wooden deck has deteriorated to the point where it's not safe even for pedestrians.

The town has been seeking funding to allow the bridge to be restored and reopened to foot traffic.

**SFGate, Website Sister-site of the San Francisco Chronicle, San Francisco**

**Preservation League grant aids historic NY bridge**

Updated 12:13 a.m., Tuesday, November 13, 2012

CLAVERACK, N.Y. (AP) — The Preservation League of New York state is presenting a grant to support restoration of a historic bridge in the Columbia County town of Claverack.

The league is presenting \$8,400 this morning to support the cost of a historic structure report for the Shaw Bridge in Claverack, 30 miles south of Albany. The bridge, built in 1870, is a double-span Whipple patent bowstring bridge, the only known bridge of its type in New York and perhaps the United States.

The bridge was listed on the National Register of Historic Places in 1980. Its wooden deck has deteriorated to the point where it's not safe even for pedestrians.

The town has been seeking funding to allow the bridge to be restored and reopened to foot traffic.

**Times Union, Albany**

**Preservation League grant aids historic NY bridge**

Updated 3:13 a.m., Tuesday, November 13, 2012

CLAVERACK, N.Y. (AP) — The Preservation League of New York state is presenting a grant to support restoration of a historic bridge in the Columbia County town of Claverack.

The league is presenting \$8,400 this morning to support the cost of a historic structure report for the Shaw Bridge in Claverack, 30 miles south of Albany. The bridge, built in 1870, is a double-span Whipple patent bowstring bridge, the only known bridge of its type in New York and perhaps the United States.

The bridge was listed on the National Register of Historic Places in 1980. Its wooden deck has deteriorated to the point where it's not safe even for pedestrians.

The town has been seeking funding to allow the bridge to be restored and reopened to foot traffic.

**Wall Street Journal, New York**

**Preservation League grant aids historic NY bridge**

November 13, 2012, 3:02 a.m. ET  
Wall Street Journal via Associated Press

CLAVERACK, N.Y. — The Preservation League of New York state is presenting a grant to support restoration of a historic bridge in the Columbia County town of Claverack.

The league is presenting \$8,400 this morning to support the cost of a historic structure report for the Shaw Bridge in Claverack, 30 miles south of Albany. The bridge, built in 1870, is a double-span Whipple patent bowstring bridge, the only known bridge of its type in New York and perhaps the United States.

The bridge was listed on the National Register of Historic Places in 1980. Its wooden deck has deteriorated to the point where it's not safe even for pedestrians.

The town has been seeking funding to allow the bridge to be restored and reopened to foot traffic.

—Copyright 2012 Associated Press

**WCAX.com, Burlington VT**

**Preservation League grant aids historic NY bridge**

*Posted: Nov 13, 2012 3:06 AM EST*

*Updated: Nov 13, 2012 3:06 AM EST*

CLAVERACK, N.Y. (AP) - The Preservation League of New York state is presenting a grant to support restoration of a historic bridge in the Columbia County town of Claverack.

The league is presenting \$8,400 this morning to support the cost of a historic structure report for the Shaw Bridge in Claverack, 30 miles south of Albany. The bridge, built in 1870, is a double-span Whipple patent bowstring bridge, the only known bridge of its type in New York and perhaps the United States.

The bridge was listed on the National Register of Historic Places in 1980. Its wooden deck has deteriorated to the point where it's not safe even for pedestrians.

The town has been seeking funding to allow the bridge to be restored and reopened to foot traffic.

*Copyright 2012 The Associated Press. All rights reserved. This material may not be published, broadcast, rewritten or redistributed.*

## **WNYT Albany NY**

### **Preservation League grant aids historic NY bridge**

Nov 13, 2012 at 10:41 AM

CLAVERACK, N.Y. (AP) - The Preservation League of New York state is presenting a grant to support restoration of a historic bridge in Claverack.

The league is presenting \$8,400 this morning to support the cost of a historic structure report for the Shaw Bridge in Claverack. The bridge, built in 1870, is a double-span Whipple patent bowstring bridge, the only known bridge of its type in New York and perhaps the United States.

The bridge was listed on the National Register of Historic Places in 1980. Its wooden deck has deteriorated to the point where it's not safe even for pedestrians.

The town has been seeking funding to allow the bridge to be restored and reopened to foot traffic.

(Copyright 2012 The Associated Press. All rights reserved. This material may not be published, broadcast, rewritten or redistributed.)



HUDSON

Public weighs in on brownfield grant app

By Billy Shannon  
Hudson-Catskill Newspapers

The city of Hudson moved a step closer Tuesday to applying for federal money to clean up one of the city's most polluted sites — the Foster's Refrigeration site at 119 North Second St.

Prior to an informal Hudson Common Council meeting, city grant writer Bill Roehr addressed community members during a public hearing on the application for a federal Environmental Protection Agency grant for brownfield cleanup.

The city is seeking \$200,000 to cover the costs of demolishing the existing structure and capping the site with dirt, gravel and an "imper-

meable geotextile material," Roehr said.

Roehr said the site will be used as a recreational area — most likely for parking spaces, an entrance way to trails and possibly as a dog park.

The half-acre site has a partially demolished building that has debris considered to contain friable asbestos.

The site "represents the parcels with the single most serious known contamination within the community," according to a draft of the grant application.

The grant writer has said the city would like to work with the Columbia Land Conservancy to rehabilitate the land.

Ellen Thurston, Third Ward supervisor, asked Roehr if there's enough room for both a parking lot and a dog park on the site, to which Roehr said, "absolutely."

The EPA is offering \$14 million to be awarded to 73 application sites across the nation. The deadline for the competitive grant has been

Please see Foster's, page A11



Claverack town officials met Tuesday with Erin Tobin of the Preservation League of New York State to accept a check in the amount of \$8,400 to support the cost of preparing a historic structure report for the Shaw Bridge. The bridge is the only known example of a double-span Whipple patent bowstring bridge in the country. The report funded by the grant will provide a physical and historical survey of the structure which will provide a guide for its restoration. The Shaw Bridge was built in 1870. It spans the Claverack Creek at Van Wyck Lane in Claverack and was closed to traffic in 1995.

Claverack's Shaw Bridge redeemed

Preservation League gives funds for engineering study

By Nathan Mayberg  
Hudson-Catskill Newspapers

The historic Shaw Bridge in Claverack, currently closed due to the vulnerable nature of its wooden deck, will be the subject of a \$10,000 study which will explore ways to save it.

The town of Claverack and the Preservation League of New York State have announced that funding has been approved for an engineering study as part of a town project to preserve the 1870 iron arched bridge, believed to be the only existing extant double-span Whipple bow-



With the 1870 Shaw Bridge behind them, left to right: Claverack town historian Sal Cozzolino, Town Board member Bob Preusser, Claverack Town Supervisor Robin Andrews, Erin Tobin, the regional director of technical and grant programs for Eastern New York, town board member Katy Cashen and Ian Nitschke, who is on the Claverack Historic Preservation Advisory Committee.

Please see Bridge, page A11

107th ASSEMBLY DISTRICT

Roberts concedes in Assembly race

By Adam Shanks  
Hudson-Catskill Newspapers

One week after Election Day, Cheryl Roberts has conceded to incumbent Republican Steve McLaughlin for the 107th Assembly District seat.

By the end of election night, with 100 percent of precincts reporting, McLaughlin had gained a clear lead. However, since a number of absentee ballots had not yet been counted, there was a mathematical, though unlikely, chance for Roberts to catch up to McLaughlin.

"After reviewing the number of affidavits, emergency and absentee ballots reported as returned to the Washington, Columbia and Rensselaer County boards of elections, it is clear that Mr. McLaughlin will win the race for the 107th Assembly seat," Roberts said in a statement Tuesday.

In order to make up the vote deficit left at the end of election night, Roberts would have needed to win approximately 80 percent of absentee, emergency and affidavit ballots in the district.

"It was very clear on election night that Assemblyman McLaughlin won re-election and was given the honor to serve another term in the state Assembly," said McLaughlin campaign spokesperson Nick Wilock. "There was certainly

Please see Assembly, page A11

CLAVERRACK

Copper theft leaves business soaking

McGuire employees report a flooded basement after piping mysteriously disappears

By Billy Shannon  
Hudson-Catskill Newspapers

Two workers at a Claverack business came into work Monday to discover a problem that put a major damper on the beginning of their week.

McGuire loading dock equipment applications engineers Tom Barberi and Ed Demski noticed something off that morning with the state Route 9H/23 office's running water, noticeable when Barberi tried to fill a coffee pot.

Not knowing what the problem was at first, they said Tuesday, one of the employees called a plumber.

What Barberi called a "rude awakening" came when he went to look in the building's basement to find it flooded with three feet of water.

The workers said they found about 40 or 50 feet of copper piping for water and sewer lines cut out from the basement.

"They took off with the water running," Demski said.

The incident was reported to the Columbia County 911 Office at 9:09 a.m. Monday and the Claverack Fire Department responded to the scene to pump out the flooded basement.

The Columbia County Sheriff's Office also responded when the report of missing copper piping was made.

Lieutenant James Andrews said Tuesday he could not discuss details since it is an open case under investigation, but said, "We're investigating a

Please see Copper, page A11

TODAY'S FORECAST

High 45 Low 30  
Mostly sunny.

For a complete report, see page A2

INSIDE

Around the Globe	A2
Obituaries	A3
Opinion	A4
Columbia / Dutchess	A5
Business	A6
Neighbors	A7
Religion	A8, A9
Sports	B1, B2, B3
Features	B4, B5
Classified	B6, B7, B8

Good morning Anna Galuska. Thank you for subscribing to the Register-Star!

Did you know...

You can get some wisdom Sunday at the Roeliff Jansen Community Library from six women writers who grew up during the 40s, 50s and 60s. See A12 for more info.

ANCRAM

Firehouse plans presented

By John Mason  
Hudson-Catskill Newspapers

The Ancram Fire Commissioners presented plans for an \$895,468 firehouse addition Tuesday at the firehouse. The architect is Joe Iuviene, of the Architectural Bureau of Chatham, who also built the town highway garage in 2010.

The addition, which is much bigger than the present firehouse, will be voted up or

Please see Plans, page A11



From left to right, Tom Miller, David Boice, William Hunt, Joe Iuviene, Terry Boyles, Dennis Sigler and Will Lutz take questions from the audience Tuesday at a presentation of the plans for a new Ancram firehouse. The addition, which is much bigger than the present firehouse, will be voted up or down in a referendum from 6 to 9 p.m. Dec. 18.



# Claverack's Shaw Bridge redeemed

Preservation League  
gives funds for  
engineering study

By Nathan Mayberg  
Hudson-Catskill Newspapers

The historic Shaw Bridge in Claverack, currently closed due to the vulnerable nature of its wooden deck, will be the subject of a \$10,000 study which will explore ways to save it.

The town of Claverack and the Preservation League of New York State have announced that funding has been approved for an engineering study as part of a town project to preserve the 1870 iron arched bridge, believed to be the only existing extant double-span Whipple bow-

Please see Bridge, page A11



David Lee/Hudson-Catskill Newspapers

With the 1870 Shaw Bridge behind them, left to right: Claverack town historian Sal Cozzolino, Town Board member Bob Preusser, Claverack Town Supervisor Robin Andrews, Erin Tobin, the regional director of technical and grant programs for Eastern New York, town board member Katy Cashen and Ian Nitschke, who is on the Claverack Historic Preservation Advisory Committee.

## Bridge

Continued from page A1

string truss bridge in the country. The Preservation League is providing an \$8,400 grant and the Claverack Town Board has approved supplying \$1,600.

The bridge is located on Van Wyck Lane over Claverack Creek in a scenic and residential part of town. The plan is to reopen the bridge to pedestrian and bicycle traffic. A barrier would be put in place to restrict vehicles from going over.

Ian Nitschke, a member of the town's Historic Preservation Committee, helped lead the effort to apply for funding and organized a petition that

was signed by hundreds of individuals. He called the bridge "world class" for its design by J.D. Hutchinson based on the formula patented by the important bridge pioneer Squire Whipple.

Most of the funds will go to Ryan Biggs, a consulting firm specializing in structural engineering, to develop the historic structure report. Nitschke said that Dr. Francis Griggs, an expert on iron bridges who is writing a biography on Squires, will also be paid for consulting work.

Once the reports are completed, the town and the committee can review different

cost estimates for restoring the bridge. Nitschke said the town could then apply for different state and federal grants. He hopes that some of the work to repair the bridge, such as replacing the wooden platform, might be able to be completed by volunteers and donations.

"This will be a great thing for the town," said Nitschke. "People have wanted this for decades."

\*\*\*

To reach reporter Nathan Mayberg, call 518-828-1616 ext. 2513 or email [nmayberg@registerstar.com](mailto:nmayberg@registerstar.com).





Wednesday, November 14, 2012

## Engineering Study for Shaw Bridge



Advocates for the historic Shaw Bridge in Claverack have received a grant from the Preservation League of New York State to do an engineering study to investigate ways to preserve the 1870 iron bridge. Shaw Bridge is believed to be the only surviving double-span Whipple bowstring truss bridge in the country. The plan is to restore the bridge for pedestrian and bicycle traffic. Nathan Mayberg has more on the story in the *Register-Star*:

*"Claverack's Shaw Bridge redeemed."*

Posted by Carole Osterink at 6:23 AM

**No comments:**

Pageviews in Past Week



**13,566**

Search This Blog

Search

advertisement

	<b>PRODUCTS FOR EVERYDAY LIVING</b>	
<b>valley variety</b> 705 Warren 11am-6pm everyday 518.828.0033		

**WGXC Newsroom, Hudson**

**Plan to save Shaw Bridge underway**

November 14, 2012 in Claverack by Staff |



The Shaw Bridge  
(Courtesy historicbridges.org)

Nathan Mayberg reports in the Register Star the town of Claverack and the Preservation League of New York recently announced funding has been approved for an engineering study of the 140-year-old Shaw Bridge in Claverack. The bridge is currently closed due to the vulnerable nature of its wooden deck. The study is part of a town project to save and preserve the iron arched bridge. The Shaw Bridge is believed to be the only existing bridge of its kind in the country. It is located on Van Wyck Lane over Claverack Creek. The plan is to eventually re-open the span to pedestrian and vehicle traffic, only. Read the full story in the Register Star:

[http://www.registerstar.com/news/article\\_6b154e16-2e18-11e2-8e3c-0019bb2963f4.html](http://www.registerstar.com/news/article_6b154e16-2e18-11e2-8e3c-0019bb2963f4.html)



## Truss bridge spans unique history

Claverack structure is only Whipple bridge of its type remaining in U.S.

By Bob Gardinier

CLAVERRACK — Preservationists want to restore an architecturally significant bridge that for the first 30 years of its life only saw horse-drawn buggies and dairy cows plying its once-busy Claverack Creek crossing.

Since 1870, the Whipple truss Shaw Bridge has stretched over a semi-rural scenic section of the

creek. It is on the state and national Historic Registers. The 1980 National Register nomination calls the bridge the only double-span example of the Whipple patent bowstring bridge known to exist in the United States.

Today, the Shaw Bridge is closed. It looks like Mother Nature is trying to reclaim the iron and wood structure that carried the historic New York to Albany Post Road (now Van Wyck Lane) over the creek.

Its combination cast- and wrought-iron structure is rusty,

### Other Capital Region Whipple Bridges

- Union College resurrected one found in the City of Johnstown in 1982 and it now carries a footpath across a gully behind the Achilles Rink on the Schenectady campus. A plaque denotes the famous alumnus.
- Normanskill Farm Bridge in Albany crosses a gully and originally was erected in a different location, which is reported as unknown by the National Registry. The bridge was moved to its present location in 1900.
- A Whipple spans the old canal in the Vischer Ferry Nature and Historic Preserve in Clifton Park. It was reconstructed there in 1998 after it was moved from Montgomery County.

the wood deck is growing weeds and vines, and bushes and trees

have latched onto the span, though  
Please see **BRIDGE E5** ►



JOHN CARL D'ANNIBALE/TIMES UNION

**PRESERVATION LEAGUE** of New York's Erin Tobin, Claverack Town Supervisor Robin Andrews and town historic preservation committee member Ian Nitschke cross the Shaw Bridge.

# BRIDGE

▼ CONTINUED FROM E1

workers recently cleared a lot of the growth.

But history buffs do not want to lose bridge, which was designed by Squire Whipple in 1841. Historian Ian Nitschke of Claverack, who has worked to spearhead the restoration project, called Whipple the "father of the Iron Truss Bridge." The Preservation League of New York State this month gave the town an \$8,400 grant to support the preservation work. It is the only Whipple bridge in the state that is still in its original location.

The bridge is significant because Whipple (1801-1888), an 1830 Union College graduate, is

recognized worldwide as the person who first correctly analyzed the stresses in a truss and put those ideas into print in his 1847 book "A Work on Bridge Building."

"His book shows how to scientifically design safe, economical, and durable bridges," Nitschke said. "It changed everything about building bridges and other structures out of metal."

Whipple's formula to calculate the stress in iron also was a basis for the development of skyscraper construction.

But the bridge design is also similar to the basic economy and simplicity of some of the earlier motorized vehicles that crossed it: Henry Ford's Model T's.

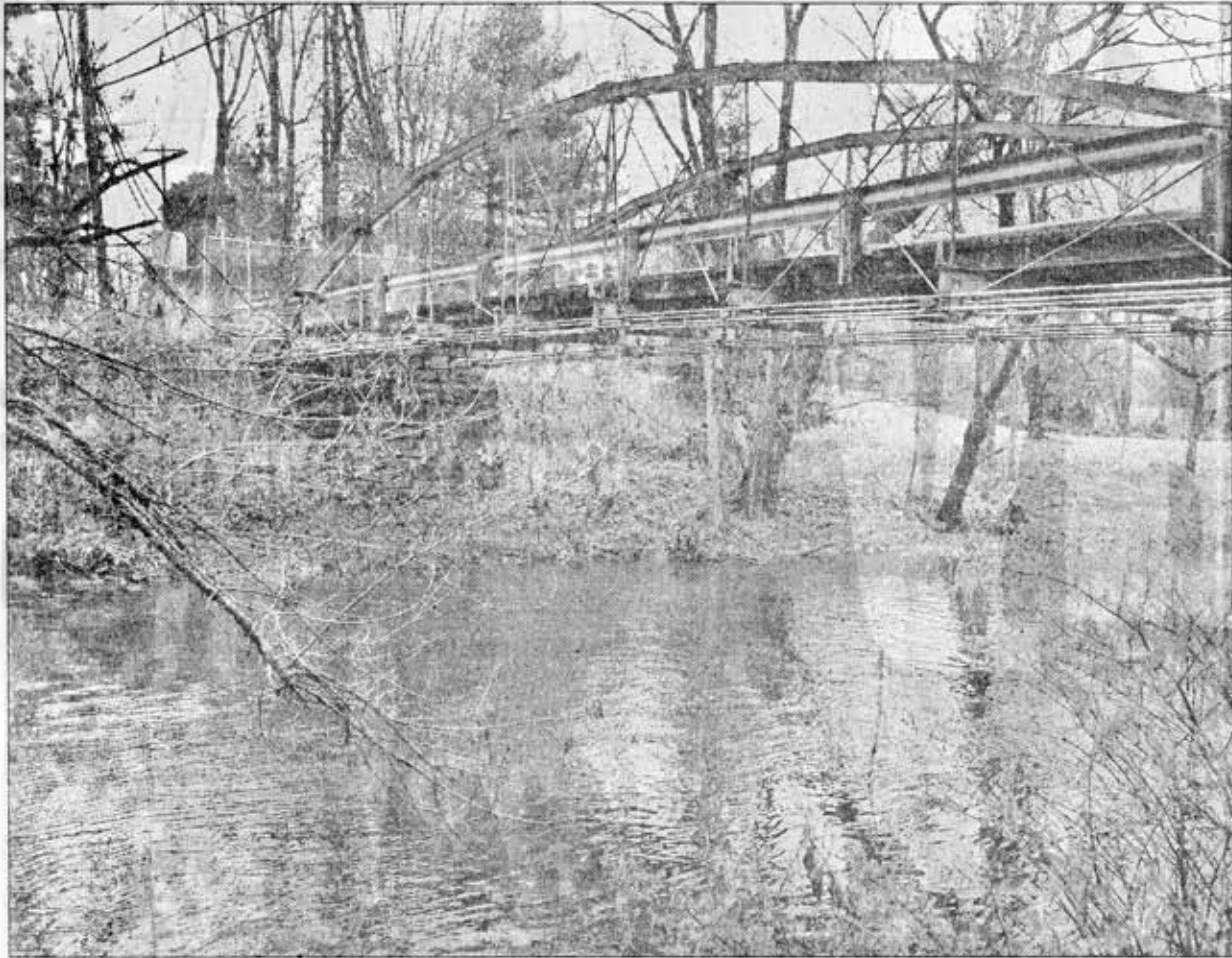
"It was designed to be a very efficient bridge that is very easy to

build in remote locations with little machinery," said Francis Griggs, Jr., engineer and historic bridge expert who has worked on several Whipple restorations.

The Shaw Bridge was manufactured by John D. Hutchinson in Troy, whose father built 35 Whipple bridges over state canals in the 1850s.

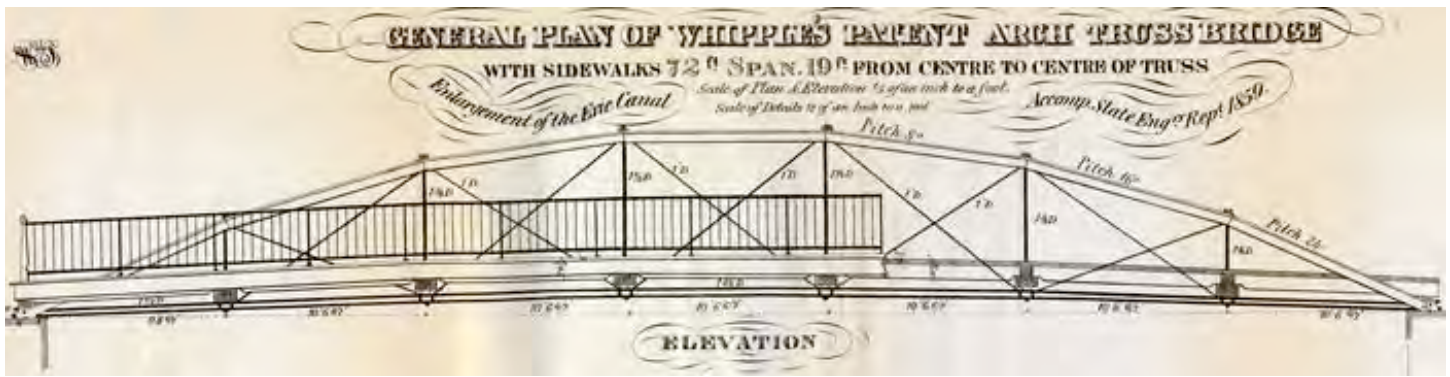
"They were really made to be put together by hand and it is the easiest bridge to move," Griggs said. "That's why it is very rare to find them in their original locations. No single part weighed more than about 250 pounds, so the materials could be carried through rough terrain and went together like Tinkertoys."

► [bgardinier@timesunion.com](mailto:bgardinier@timesunion.com) ■  
518-454-5696 ■ @BobGardinier



JOHN CARL D'ANNIBALE/TIMES UNION

**THE 1870** double-span bowstring Whipple patent Shaw Bridge crosses Claverack Creek on Van Wyck Lane. The Preservation League of New York State gave the town an \$8,400 grant to support preservation work.



## Help Preserve the Landmark Shaw Bridge in Claverack NY

### To: Preserve New York Grant Panel Members

I am writing to urge you to fund a Historic Structure Report for the Shaw Bridge.

This landmark bridge is described in the National Register of Historic Places as "a structure of outstanding importance to the history of American engineering and transportation technology." It is included in the Library of Congress Historic American Engineering Record; ranked by HistoricBridges.org as a bridge with one of the highest Historic Significance Ratings; recognized as an important American bridge in BridgeHunter.com; and identified as an international engineering landmark by Structurae! The bridge employs the basic design of 1830 Union College graduate Squire Whipple who has been called the "Father of Iron Bridges" by Dr. Francis. E. Griggs Jr., Distinguished Member of American Society of Civil Engineers (Dist.M.ASCE). The Shaw Bridge is the only extant double-span Whipple bowstring truss bridge in the U.S. and is in its original location along the historic New York to Albany Post Road.

For the first 125 years after construction, the Shaw Bridge provided vital service and was well maintained but for the last 15 years it has been closed to all traffic, including pedestrian traffic, with no maintenance (until vegetation was recently removed) resulting in rapid deterioration of the wooden bridge deck and rusting of iron components. Without maintenance the bridge will deteriorate beyond restoration and become a dangerous eyesore waiting for an accident.

The modest requested funds (\$10,000) would be used to pay consultants to produce a Historic Structure Report, which would describe the current condition of the bridge and recommend cost effective ways to stabilize, rehabilitate, and restore the bridge for pedestrian use.

Many residents of the Town of Claverack were deeply disappointed that the Preserve New York Grant Program did not fund the Historic Structure Report last year, although Preserve New York encouraged us to apply again this year. Meanwhile, many hours have been volunteered by Town Highway personnel to clear vegetation; a professional photographer has taken more than 150 photographs of the bridge; a group of engineers have visited the site, offered advice, and strongly supported the restoration of the bridge; and the Town historian and a Community College instructor have researched and drafted the history of Squire Whipple, the Shaw Bridge, Albany Post Road, and the Shaw family.

Without the expert guidance of a Historic Structure Report, however, substantive restoration cannot move forward and unfortunately momentum has been lost during this past year. It is vitally important that the Historic Structure Report is funded this year as it will not only help save this historic civil engineering landmark but also give a tremendous boost to preservation efforts in the Town of Claverack, Columbia County, and New York State.

The Shaw Bridge restoration project is an important building block in Claverack's historic preservation efforts, and currently its most visible. Success in preserving this historic bridge and making it accessible to residents on a daily basis will energize the community and help define a broader historic preservation vision to preserve Claverack's unique history and make it come alive. Many worthy but difficult preservation projects are waiting in the wings for the success of this project, including the restoration of the Van Hoesen House, the Mellenville Railroad Station, updating the list of approximately 200 Town of Claverack historic homes, taking an inventory of historic homes in the Village of Philmont, and continuing to place outstanding individual historic properties on the National Register of Historic Places.

## Help Preserve the Landmark Shaw Bridge in Claverack NY

Name	City	State	Country	Signed On	Comments
Abby Lappen	Claverack	NY	United States	4/8/12	
Abigail Westlake	Ancram	NY	United States	4/28/12	This vital historic bridge is part of our country's heritage. It must be preserved.
Africa Heiderhoff	Hudson	NY	United States	5/5/12	
Al Charron Jr.	Phillmont	NY	United States	4/15/12	
Alan Grupp	Hollowville	NY	United States	4/17/12	
Alan Wheeler	Claverack	NY	United States	5/5/12	
alayne & neil howard	hudson	NY	United States	4/9/12	
Albina Evans	Claverack	NY	United States	4/10/12	
Alex Oliver	New York	NY	United States	4/16/12	
Alice Palmisano	Claverack	NY	United States	4/30/12	The bridge is our neighbor and we have been able to observe the number of visitors to this historic site.
Alida Margolin	Hudson	NY	United States	4/16/12	
Alison Weinberg	Copake Falls	NY	United States	5/5/12	
Allan Platner	Hudson	NY	United States	5/5/12	
amanda triensens	chatham	NY	United States	4/8/12	
Amy Flaum	Claverack	NY	United States	4/10/12	
Amy Folmsbee	Claverack	NY	United States	5/5/12	
Andrea Bernier	Poughkeepsie	NY	United States	5/5/12	Let's save this bridge!
Andrea Butler	Brooklyn	NY	United States	4/28/12	
Andrew DeGiacomo	Stuyvesant	NY	United States	4/16/12	
Andy King	Hudson	NY	United States	4/28/12	
ann levitt	Hudson	NY	United States	4/9/12	
Ann Tirschwell	Austerlitz	NY	United States	4/21/12	
Ann Van Deusen	Claverack	NY	United States	5/5/12	
Anna Nitschke	Hillsdale	NY	United States	4/5/12	
Anna Rachminov	Stanfordville	NY	United States	4/4/12	
Anonymous	Claverack	NY	United States	4/14/12	
Anthony Bottino	Claverack	NY	United States	4/18/12	
Ariela Greenberg-Nielsen	Malden Bridge	NY	United States	5/5/12	
Arnold Van Deusen	Claverack	NY	United States	5/5/12	
Arnold Zimmerman	New York	NY	United States	4/13/12	
Ashley Cleinman-Ribar	Hudson	NY	United States	5/5/12	
Austin Brodley	Hudson	NY	United States	5/5/12	
B. Docktor	Ancram	NY	United States	4/12/12	I look forward to getting to walk on that bridge!
barbara barrie	ghent	NY	United States	4/16/12	
Barbara Sugin	Ghent	NY	United States	4/9/12	
Barbara Ullman	Claverack	NY	United States	4/8/12	
Barbara Ward	Portsmouth	NH	United States	4/18/12	We lost an important bridge here in NH (listed on the National Trust for Historic Preservation Most Endangered Landmarks) because the problems were not addressed as soon as they should have been. It is my hope that we will not lose this important bridge for the same reason.
Bart Hoover	Claverack	NY	United States	4/19/12	Important to maintain our local history
Beatrice Croteau	Claverack	NY	United States	5/5/12	
belinda lawrence breese	hudson	NY	United States	4/16/12	
Bernard Savery	Philmont	NY	United States	4/30/12	
Beth Feldman	Kittering Point	ME	United States	5/5/12	
Betsy Cashen	Hudson	NY	United States	4/8/12	
Betsy Jacks	Mellenville	NY	United States	5/7/12	
Betty Wells	Birmingham	AL	United States	4/18/12	This is so important.
Bill Bullard	Ghent	NY	United States	4/8/12	
Bill Dunspaugh	Claverack	NY	United States	5/5/12	
bill laraway	Valatie	NY	United States	4/14/12	
BillieJune Mauro	Cape Coral	NY	United States	4/26/12	Descendant of Whipple.
Blaine Whipple	Portland	OR	United States	4/13/12	
Bob Kardens	Claverack	NY	United States	4/28/12	
Brenda Shufelt	Mellenville	NY	United States	4/9/12	
Brian Swardstrom	Claverack	NY	United States	4/18/12	
Brit Reichel	Ghent	NY	United States	4/11/12	
Bruce Hallenbeck	Claverack	NY	United States	4/14/12	
buddy molinski	hudson	NY	United States	4/8/12	



## Help Preserve the Landmark Shaw Bridge in Claverack NY

Name	City	State	Country	Signed On	Comments
C. Koeppel	Elizaville	NY	United States	4/28/12	
Carol Friedman	Hudson	NY	United States	4/17/12	
Carol J. Novak	Claverack	NY	United States	4/30/12	
Carol Sukinik	Philmont	NY	United States	4/10/12	
carole clark	livingston	NY	United States	4/5/12	
Carole Osterink	Hudson	NY	United States	4/11/12	
Caroline ONeill	Philmont	NY	United States	5/6/12	
Caroline Richards	Saugerties	NY	United States	5/5/12	
Carolyn Stern	Philmont	NY	United States	4/11/12	
Caryl Shakshober	Ballston Lake	NY	United States	4/30/12	
Cassandra Holsapple	Chatham	NY	United States	4/30/12	
Cecile Harrison	Hudson	NY	United States	4/9/12	
Chandra Ping	Ghent	NY	United States	4/30/12	
Charles Anderer	Claverack	NY	United States	4/9/12	
Charles Nichols	Philmont	NY	United States	4/10/12	
Charles Schram	Claverack	NY	United States	4/10/12	I grew up next to the bridge and still live on that road. Many memories there, hanging out on and under the bridge, the slow roll of the planks when a car went over it, how the creek would make two channels after the spring floods. I could go on forever. A large part of my childhood was spent there. We always knew it was historically significant but now it has been neglected. This is a good effort to bring it back.
Charlie Post	Claverack	NY	United States	4/5/12	
Cheryl Halleson	Claverack	NY	United States	4/27/12	
Chloe Zerwick	Hudson	NY	United States	4/12/12	
Chris Cashen	Hudson	NY	United States	4/17/12	
Chris Bishop	Hudson	NY	United States	4/17/12	
Chris Carr	Hollowville	NY	United States	4/18/12	
Chris Eigeman	Claverack	NY	United States	4/11/12	
Chris Lastovicka	Philmont	NY	United States	4/9/12	
Chris Wagoner	Hudson	NY	United States	5/5/12	
Christian Sweningsen	Stuyvesant	NY	United States	4/4/12	Once a structure like this is gone, it can't be restored. Replacement doesn't cut it. Save our heritage!
Christina McKenna	Claverack	NY	United States	4/28/12	
Christopher Halpert	Hudson	NY	United States	5/5/12	
Christopher Landy	Brooklyn	NY	United States	4/16/12	
Christopher Post	Claverack	NY	United States	4/10/12	
Christopher Reed	Philmont	NY	United States	4/11/12	
Chuck Brassard	Claverack	NY	United States	5/5/12	
Chuck Dowe	Boston	MA	United States	4/18/12	
Chuck Sussman	Philmont	NY	United States	4/20/12	
Cindy Alexander	Craryville	NY	United States	4/24/12	
Concerned Citizen	New City	NY	United States	4/4/12	
Craig Cunningham	Hillsdale	NY	United States	4/6/12	
Craig Fitt	Claverack	NY	United States	4/28/12	
Cricket Coleman	Claverack	NY	United States	4/28/12	
Curtis Vincent	Claverack	NY	United States	5/5/12	
cyndy hall	claverack	NY	United States	4/6/12	It is the last of the magnificent Whipple bridges in the country!
Cyrene Puccio	Oakland	CA	United States	4/28/12	
D. McKay	Claverack	NY	United States	4/28/12	
Damon Filli	claverack	NY	United States	4/10/12	
Dan Drotzman	St. Michael	MN	United States	4/17/12	
Dan Renehan	Jackson Hights	NY	United States	5/5/12	
Dana Wantuch	Burnt Hills	NY	United States	5/5/12	Lots of childhood memories of this unique bridge.
Danica Wolkiser	Philmont	NY	United States	4/7/12	
Daniel Esterman	Claverack	NY	United States	4/5/12	
Daniel Case	Walden	NY	United States	4/5/12	I researched, wrote and took the photo for the Shaw Bridge Wikipedia article. I would hate for all that work to go to waste.
Daniel Starr	Philmont	NY	United States	4/10/12	
Danielle Hammell	Copake	NY	United States	4/28/12	
Darren Norris	Germantown	NY	United States	5/5/12	Bring it back to life!

## Help Preserve the Landmark Shaw Bridge in Claverack NY

Name	City	State	Country	Signed On	Comments
darrin culver	Hudson	NY	United States	4/10/12	
Darryl Hudak	Brooklyn	NY	United States	5/1/12	
Dave King	Philmont	NY	United States	4/11/12	
david armstrong	Laguna Beach	CA	United States	4/18/12	
David Baylen	Claverack	NY	United States	4/8/12	
David CC Foley	Craryville	NY	United States	4/22/12	
david foell	craryville	NY	United States	4/5/12	
David Gansowski	Stockport	NY	United States	5/5/12	
David Haun	Columbia	MO	United States	4/10/12	
David Iorio	Hudson	NY	United States	4/16/12	
David Lee	Chatham	NY	United States	5/5/12	
David Marston	Hudson	NY	United States	4/11/12	
David Riley	Savannah	GA	United States	5/5/12	
David Shaw	Arundel	ME	United States	4/10/12	
Debbie Collett	Ghent	NY	United States	4/15/12	I've grown up in Columbia County. I love the rural nature, the beauty and the people. I like to participate in the preservation of historically significant landmarks as well as the landscape of this county I love.
Debby Mayer	Hudson	NY	United States	4/25/12	
Deborah A. Stevenson	Claverack	NY	United States	4/13/12	Oh! Finally... that little gem is awoken and will be polished to SHINE once again! So many beautiful treasures hidden away in our area. Hopefully, to be awoken and for all to enjoy!
Deborah Byer	Claverack	NY	United States	4/17/12	
Deborah Davis	Hudson	NY	United States	4/10/12	
Deborah Shakotko	Hudson	NY	United States	4/5/12	
Dee Marotto	Claverack	NY	United States	4/27/12	
Dennis J. White	Selkirk	NY	United States	5/5/12	Great mission -- absolutely worth the effort.
Dennis Soucy Jr	Hudson	NY	United States	4/30/12	
DeWayne Powell	Ghent	NY	United States	4/7/12	
Diane Boice Yorck	Hudson	NY	United States	4/28/12	
Diane Weldon	New York	NY	United States	5/5/12	
Diane Zasorin	Claverack	NY	United States	4/28/12	
Dianna McCarthy	New York	NY	United States	4/8/12	
Ditte Nielsen	Malden Bridge	NY	United States	5/5/12	
Donald Bertucci	Hudson	NY	United States	4/17/12	
Donna Davey	Hudson	NY	United States	4/7/12	
donna jordan	ghent	NY	United States	4/11/12	We must preserve structures that link us to the past and preserve our rural landscape.
Donna Malmstrom	Rensselaer	NY	United States	4/30/12	
Dori Shields	Ballston Lake	NY	United States	4/30/12	
Doug Cropper	Philmont	NY	United States	4/10/12	
Douglas Casterlin	Hillsdale	NY	United States	4/28/12	
E Kline	Claverack	NY	United States	4/17/12	
Ed Demski	Claverack	NY	United States	4/28/12	Fond memories fishing under the bridge and hearing the planks speak to me.
Ed Morales	Philmont	NY	United States	4/28/12	
Edward Laurson	Denver	CO	United States	4/4/12	
Edward Balyka	Hudson	NY	United States	5/5/12	
Edward H. Howe, Jr.	Claverack	NY	United States	5/5/12	
Elaine Kline	Claverack	NY	United States	4/13/12	
Eleanor Torjusen	New York	NY	United States	4/28/12	
Eliel Mamousette	CRARYVILLE	NY	United States	4/17/12	
Elizabeth Davis	Hudson	NY	United States	4/8/12	
Elizabeth Davis	New York	NY	United States	5/7/12	
Elizabeth Grupp	New York	NY	United States	5/7/12	
Elizabeth Grupp	New York	NY	United States	5/7/12	
Elizabeth Howe	Claverack	NY	United States	5/5/12	
Elizabeth Katsivelos	Claverack	NY	United States	4/8/12	
Elizabeth Nyland	Greenport	NY	United States	5/5/12	
Elizabeth van Dreunen	Lawrencetown		Canada	4/8/12	
Ellen Harris-Braun	East Chatham	NY	United States	4/30/12	
Elvina Esselstyn	Claverack	NY	United States	4/17/12	



## Help Preserve the Landmark Shaw Bridge in Claverack NY

Name	City	State	Country	Signed On	Comments
Enid Futterman	Craryville	NY	United States	4/4/12	The bridges of Columbia County are bridges to our history, and the Shaw Bridge is the most historic of all.
Eric Eisenhart	Hudson	NY	United States	4/28/12	
Erik Kauppiner	Claverack	NY	United States	4/28/12	
Erin Edwards	Taghkanic	NY	United States	5/5/12	
Eugene Hallenbeck	Hillsdale	NY	United States	5/5/12	
Evelyn E. King	Claverack	NY	United States	4/28/12	
Fayal Greene	Hudson	NY	United States	4/4/12	
Fran Pizza	Hudson	NY	United States	4/9/12	
Frances Schools	Ghent	NY	United States	4/16/12	
frank sblandido	ghent	NY	United States	4/16/12	
Fred J. Leicht	Claverack	NY	United States	5/5/12	
Gabe Schaftlein	Hudson	NY	United States	4/28/12	
Gabe Sasso	Vernon	NJ	United States	5/5/12	
Gabriele Gulielmetti	Hudson	NY	United States	5/5/12	
Garry Lough	Wylie	TX	United States	4/6/12	
Gary Mazzacano	Greenport	NY	United States	5/5/12	
Gary Miller	Philmont	NY	United States	4/9/12	
Gary Schiro	Hudson	NY	United States	4/10/12	
Gayle Skluzacek	Hollowville	NY	United States	4/8/12	
George Jahn	Spencertown	NY	United States	4/16/12	
George Keeler	Claverack	NY	United States	5/5/12	
George Rodenhausen	Claverack	NY	United States	4/8/12	
George Trinka	Hudson	NY	United States	4/10/12	
Gianni Orti	Chatham	NY	United States	4/8/12	
Glenn Tunstull	Craryville	NY	United States	4/8/12	
Gordon Scarritt	Claverack	NY	United States	4/18/12	
Greg Gallin	Red Hook	NY	United States	4/27/12	
Hamilton Dorian	Heber City	UT	United States	4/18/12	
Harry B Halaco	Claverack	NY	United States	4/27/12	
Helene Schwager	Claverack	NY	United States	5/5/12	
Henry Neale	Claverack	NY	United States	4/9/12	
Henry Weil	Ghent	NY	United States	5/5/12	
Hildegard Thompson	Claverack	NY	United States	4/30/12	Walking bridge OK!!!
Howard Brandston	Hollowville	NY	United States	4/8/12	
Ian Stewart	Ghent	NY	United States	5/7/12	
Ian Nitschke	Claverack	NY	United States	4/3/12	Squire Whipple was the author of two highly influential books: "A Work on Bridge Building" and "An elementary and practical treatise on bridge building" that form the foundation of civil engineering in the United States. It is fitting that we should preserve the only known example of a Whipple double-span bowstring truss bridge at its original location on the historic Albany Post Road.
Ilna Lawrence	Claverack	NY	United States	5/5/12	
ilse melamid	Mellenville	NY	United States	4/10/12	
J Weber	N. Greenbush	NY	United States	5/5/12	
Jaime Lamomd	Philmont	NY	United States	4/17/12	
Jame Punt	Ancram	NY	United States	5/5/12	
James Krewson	Catskill,	NY	United States	4/28/12	
James Brady	Claverack	NY	United States	4/12/12	
James Morel	Ghent	NY	United States	5/5/12	
James Strickler, L.Ac.	Hudson	NY	United States	4/8/12	Because, Preservation IS important, even amidst so many other issues that compete for our caring, and our sharing.
James W. Keegan	Claverack	NY	United States	5/5/12	
Jane Wright	philmont	NY	United States	5/5/12	
Janet Spizer	Craryville	NY	United States	4/28/12	
Janet Stanton	Sheffield	MA	United States	4/29/12	
Jay Shulman	Claverack	NY	United States	4/8/12	
Jaylyn Schultz	Claverack	NY	United States	4/9/12	
Jean Phifer	Hillsdale	NY	United States	4/30/12	
Jeane LaPorta	Claverack	NY	United States	4/14/12	How can we just stand by and let this historic bridge go to ruin?
Jeanne Bergen	Philmont	NY	United States	4/7/12	

## Help Preserve the Landmark Shaw Bridge in Claverack NY

Name	City	State	Country	Signed On	Comments
Jeanne Leonard	Claverack	NY	United States	5/7/12	
Jeanne Zornada	New York	NY	United States	4/15/12	
Jeffrey Bancroft	Philmont	NY	United States	4/8/12	
Jen Wademan	Claverack	NY	United States	4/14/12	
Jenna Lamond	Philmont	NY	United States	4/6/12	
Jennifer Arenskjold	Hudson	NY	United States	4/6/12	
jennifer mcisaac	philmont	NY	United States	4/11/12	
Jennifer Post	Claverack	NY	United States	4/3/12	
Jennifer Rice-Borgerson	Portland	OR	United States	4/17/12	
jennifer sternberg	Hudson	NY	United States	4/17/12	
Jennifer Whiddon	Dublin	GA	United States	4/17/12	
Jennifer White	Selkirk	NY	United States	5/5/12	
Jerry Soechting	Great Barrington	MA	United States	5/5/12	
Jessi Dean	Hillsdale	NY	United States	4/30/12	
Jill Barnard	Claverack	NY	United States	4/16/12	
Jim Sherman	Claverack	NY	United States	5/5/12	
Jim Van Deusen	Claverack	NY	United States	5/5/12	
Joan Caputo	Claverack	NY	United States	4/9/12	To support significant historical preservation.
Joan Donohue	Claverack	NY	United States	5/5/12	
Joan Jotkofsky	Claverack	NY	United States	5/5/12	
Joan Mattson	Philmont	NY	United States	4/12/12	
Joanne Allie	Claverack	NY	United States	5/5/12	
Joanne Vilaghy	Philmont	NY	United States	4/8/12	This beautiful bridge is a community treasure and should be made available for everyone to use.
Joe Baker	Claverack	NY	United States	4/17/12	
John Davis	Hudson	NY	United States	4/16/12	
John DeRocha	Copake	NY	United States	5/5/12	
John G. Schaible	Claverack	NY	United States	5/5/12	Nice Bridge
John Gourlay	Philmont	NY	United States	4/8/12	
John Isaacs	Claverack	NY	United States	4/29/12	
John Lee	Claverack	NY	United States	4/10/12	This bridge restoration project is of great historic significance for the town and the county. It will continue to have an impact for our children and their children.
John Mahoney	Hudson	NY	United States	5/5/12	
John Murphy	Hudson	NY	United States	5/5/12	
John Roberts	Taghkanic	NY	United States	5/5/12	
John Soechting	Great Barrington	MA	United States	5/5/12	
John Weincke	Hillsdale	NY	United States	4/29/12	
Joseph Steele	Craryville	NY	United States	4/17/12	
Josephine Konow	Claverack	NY	United States	4/9/12	To support significant historical preservation.
Josh Manner	Claverack	NY	United States	4/30/12	
Julie Grace	Valatie	NY	United States	4/10/12	
Julie Zapp	Claverack	NY	United States	4/30/12	
K Christiano	Hudson	NY	United States	4/18/12	
Kara Keeler	Hudson	NY	United States	5/5/12	
Karen Davala	Philmont	NY	United States	4/10/12	
Karen Franceschi	Claverack	NY	United States	5/5/12	
Karen Rosand	Hudson	NY	United States	5/7/12	
Kari Rieser	Hudson	NY	United States	4/28/12	
Karl Sanzenbacher	Baltimore	MD	United States	4/4/12	
Karrie Pizza	Claverack	NY	United States	4/10/12	
Karyn Novakowski	Philmont	NY	United States	4/10/12	
Kate Cohen	Spencertown	NY	United States	4/15/12	
Kate Mostaccio	Philmont	NY	United States	4/19/12	
Katherine Lauster	Chino Valley	AZ	United States	4/28/12	
Kathy Quirk	Claverack	NY	United States	5/5/12	
Katy Cashen	Hudson	NY	United States	4/11/12	
Keith Kanaga	Ghent	NY	United States	4/8/12	
Keith Torjensen	Claverack	NY	United States	5/5/12	
Ken Dow	Mellenville	NY	United States	4/8/12	
Keren Fonda	Claverack	NY	United States	5/5/12	
Kerinn Glover	Jackson Hights	NY	United States	5/5/12	
Kevin Daly	Claverack	NY	United States	4/11/12	
kevin ely	Hudson	NY	United States	4/22/12	

## Help Preserve the Landmark Shaw Bridge in Claverack NY

Name	City	State	Country	Signed On	Comments
Kevin Johnson	Claverack	NY	United States	4/13/12	
Kevin Katz	Woodstock	NY	United States	5/5/12	
Kevin Wolf	New York	NY	United States	5/6/12	
Kim Banks	Claverack	NY	United States	4/28/12	
kit white	ancramdale	NY	United States	4/28/12	
Kitty Osterhoudt	Claverack	NY	United States	5/5/12	
Kristal Heinz	Hudson	NY	United States	5/5/12	
kristin castle	valatie	NY	United States	4/11/12	
L. O'Brien	Queens	NY	United States	4/28/12	
Langdon Winner	Troy	NY	United States	4/16/12	
Larry Fingar	Claverack	NY	United States	4/28/12	
Larry Gaylord	Claverack	NY	United States	5/5/12	
larry Mattson	Kansas City	MO	United States	4/19/12	
Laura Risch	Claverack	NY	United States	4/13/12	
Laura Skutch	Norwalk	CT	United States	4/14/12	
Laurel Durst	Craryville	NY	United States	4/11/12	The bridge in and of itself is beautiful, or would be once the traffic safety additions have been removed, and the bridge is restored. It can only enhance the area, and add to its attractions.
Lauren Letellier	NY	NY	United States	4/24/12	
Laurie Fiederlein	Hudson	NY	United States	4/7/12	
Laurie Nicholson	Claverack	NY	United States	4/30/12	
Leila Gansowski	Stockpot	NY	United States	5/5/12	
Lena Rehberger	Grebenhain		Germany	4/4/12	
Leo Holder	Durham	NY	United States	5/5/12	Save at all costs!
Leon Cook Jr.	Claverack	NY	United States	5/5/12	
Leonard Sugin	Ghent	NY	United States	4/9/12	
Leonora Heinrich	Brooklyn	NY	United States	4/9/12	
Letitia Chamberlain	Ghent	NY	United States	4/10/12	
li yu	jackson heights	NY	United States	4/10/12	
lila pague	claverack	NY	United States	4/9/12	
Linda Gatter AIA	Philmont	NY	United States	4/10/12	
Linda H. Small	Port Clyde	ME	United States	4/28/12	I used to live in the Berkshires and love that part of NY State. Old bridges can't be allowed to fall down. Let's save it.
Linda Hanlon	Claverack	NY	United States	4/22/12	
Linda McNutt	Hudson	NY	United States	4/30/12	
Linda Van Der Meulen	Hudson	NY	United States	4/9/12	
Lisa McNally	Claverack	NY	United States	4/30/12	
Lisa Ravetto	Hudson	NY	United States	4/9/12	
lisa sikoskie	Troy	NY	United States	4/29/12	
Lisa Vahradian	New York	NY	United States	4/10/12	
Lithe Sebesth	Hudson	NY	United States	5/5/12	
Lloyd Lawrence	Claverack	NY	United States	5/5/12	
Lloyd Tipple	Philmont	NY	United States	5/5/12	
Louis Lamont	Claverack	NY	United States	4/12/12	I think it would be nice to preserve one of Claverack's Landmarks. It has a very nice setting over the Claverack Creek.
Loyita Woods	Kinderhook	NY	United States	4/30/12	
Lynda Akerman	Mellenville	NY	United States	4/10/12	
Lynn Davis	Hudson	NY	United States	5/5/12	
M B Behrent	Hudson	NY	United States	4/28/12	
M. Schwab	Chatham	NY	United States	5/5/12	
M.M. Hood	Claverack	NY	United States	5/5/12	Live on Brookbound Lane
MacKenzie Serpe	Everett	WA	United States	4/29/12	
Malik Boo	Hudson	NY	United States	5/5/12	Save it!
Malka Roth	Saugerties	NY	United States	5/5/12	
Marc Propper	Saugerties	NY	United States	5/5/12	Save it!
Marc Whipple	Dallas	TX	United States	4/18/12	
Margaret Davidson	Livingston	NY	United States	4/17/12	
Margaret Cashen	Claverack	NY	United States	4/12/12	
Margaret Novak	Taghkanic	NY	United States	4/28/12	
Margherita Davis	Wanaque	NJ	United States	4/28/12	
Margot Becker	Hudson	NY	United States	5/5/12	

## Help Preserve the Landmark Shaw Bridge in Claverack NY

Name	City	State	Country	Signed On	Comments
marguerita putnam	new york	NY	United States	4/28/12	
Maria Crespo	Philmont	NY	United States	5/5/12	
Mariann Caprino	Claverack	NY	United States	4/28/12	
Marie Culver	Hudson.	NY	United States	4/10/12	
Marie D. Leicht	Claverack	NY	United States	5/5/12	
Mark Cawley	Hillsdale	NY	United States	4/29/12	
Mark Greenberg	Malden Bridge	NY	United States	5/5/12	
Martin Baumgold	Claverack	NY	United States	4/8/12	
martina salisbury	brooklyn	NY	United States	5/1/12	
Marty Davidson	Claverack	NY	United States	4/4/12	This is the only one of it's kind in the USA if not the world, a Whipple double-span bowstring truss bridge!
Mary Ames	Hudson	NY	United States	4/10/12	
Mary Busch	Red Hook	NY	United States	5/5/12	
Mary Daly	Hudson	NY	United States	4/9/12	
Mary Elizabeth Vincent	Claverack	NY	United States	5/5/12	
Mary Evans	Livingston	NY	United States	5/5/12	
Mary Koch	Hudson	NY	United States	4/8/12	
Mary Moores	Claverack	NY	United States	4/18/12	
Maryanne Lee	Claverack	NY	United States	4/10/12	Saving Shaw Bridge is so important in preserving Claverack's rich historic past. As a resident of Claverack I consider myself very fortunate to have such a rare and unique bridge in our town. Please remember, if this bridge is demolished which is irreversible, the history and culture that is attached to this structure will also be lost.
Maryl Fish Acker	Claverack	NY	United States	4/8/12	
Matt Colwell	Claverack	NY	United States	5/5/12	
Max Dannis	Philmont	NY	United States	4/8/12	
Max Heinrich, Ph.D.	Mellenville	NY	United States	4/8/12	
Maxine Wulia	Claverack	NY	United States	4/30/12	
melanie brandston	Claverack	NY	United States	4/9/12	
Melanie Mintz	Germantown	NY	United States	4/17/12	
Melissa Jennings	Chatham	NY	United States	4/11/12	
Melissa Waterhouse	Philmont	NY	United States	4/29/12	
Melora Creager	Hudson	NY	United States	4/20/12	...to preserve architecturally/historically important structure.
Merry DePhillips	Hudson	NY	United States	5/5/12	
Michael Altobello	Claverack	NY	United States	4/18/12	
Michael Barrett	Troy	NY	United States	4/10/12	
michael drotzman	tabor	SD	United States	4/19/12	
Michael Harris	Hudson	NY	United States	5/5/12	
Michael Leonard	Kinderhook	NY	United States	5/7/12	
Michael Priggen	Hudson	NY	United States	4/28/12	
Michael S. Johnston	Philmont	NY	United States	4/12/12	Great Project!
Michael Singer	Spencertown	NY	United States	4/11/12	
Michael Steele	Morrice	MI	United States	4/11/12	
Michael Waldholz	Claverack	NY	United States	4/28/12	
Michael Wolf	Elizaville	NY	United States	4/28/12	
Mike Wantuch	Burnt Hills	NY	United States	5/5/12	
Mitchel Chalek	Claverack	NY	United States	4/10/12	
Moirra Stone	Claverack	NY	United States	4/8/12	
Moisha Blechman	Ancram	NY	United States	4/11/12	
Mona Coade-Wingate	Hudson	NY	United States	5/5/12	Save it!
Monte Jennings Sr.	Philmont	NY	United States	4/14/12	An item of such historical importance needs the attention. When it is gone, it is gone forever.
Morgen Bowers	Hudson	NY	United States	4/10/12	
Nana Barber	Germantown	NY	United States	5/5/12	
Nancy Dorian	Green Valley	AZ	United States	4/18/12	As a Whipple descendant.
Nancy Felcetto	Hudson	NY	United States	4/12/12	
Nancy Felcetto	Taghkanic	NY	United States	5/5/12	
nancy randall	claverack	NY	United States	4/10/12	
Nancy White	West Taghkanic	NY	United States	4/30/12	
Natalie Helm	Philmont	NY	United States	4/12/12	
Nathan Chess	Hollowville	NY	United States	4/10/12	

## Help Preserve the Landmark Shaw Bridge in Claverack NY

Name	City	State	Country	Signed On	Comments
Nathan Holth	Rochester	MI	United States	4/10/12	HistoricBridges.org strongly supports the preservation and in-kind restoration of this nationally significant historic bridge.
Nathaniel Williams	Philmont	NY	United States	4/17/12	
Ned Depew	Stuyvesant	NY	United States	4/4/12	
Nell Washington	Claverack	NY	United States	4/17/12	to preserve history and provide a new experience to our residents and to encourage visitors to our hamlet.
Nicon W. Zasorin	Claverack	NY	United States	4/28/12	First major design change in USA of cast iron bridges
Nina Ginnel	Hudson	NY	United States	5/5/12	Save the bridge!
Nina Sklansky	Catskill	NY	United States	4/16/12	
Nona Lange	Ghent	NY	United States	4/17/12	
Norma Barnard	Claverack	NY	United States	4/14/12	
Norman Mintz	Germantown	NY	United States	4/8/12	
patricia rodenhausen	Greenport	NY	United States	4/21/12	
Patti Matheney	Ghent	NY	United States	4/8/12	
Patty Nordberg	West Taghkanic	NY	United States	4/28/12	
Paul Hoffman	Hudson	NY	United States	4/11/12	
Paul Hamann	Hudson	NY	United States	5/5/12	
Peggy Anderson	Hudson	NY	United States	5/5/12	
Peggy Lampman	Claverack	NY	United States	4/8/12	We should be very proud of our little gem and make sure it is restored and maintained.
peggy polenberg	hudson	NY	United States	4/20/12	
Perry Cooney	Hudson	NY	United States	4/14/12	
Peter Bevacqua	Claverack	NY	United States	4/8/12	
peter coan	ghent	NY	United States	4/11/12	
Peter Donahoe	Stuyvesant Falls	NY	United States	4/14/12	to save yet another historic bridge from neglect.
Peter Hotaling Jr.	Greenport	NY	United States	5/5/12	
Peter Jung	Hudson	NY	United States	5/3/12	
Peter Lacovara	Albany	NY	United States	4/28/12	
Peter Plaia	Hudson	NY	United States	4/10/12	
Peter Reiss	Hudson	NY	United States	5/5/12	I believe that the bridge has historical value and I would see it as a really notable part of a route on which to walk - for both immediate area residents and those of us who live a little further out...
Peter Spears	Claverack	NY	United States	4/18/12	
Peter Watson	New York	NY	United States	4/16/12	
Peter Wright	Brooklyn	NY	United States	4/28/12	I love Claverack and its history.
Peter Zapp	Claverack	NY	United States	4/30/12	
Phillip Schwartz	Ghent	NY	United States	4/8/12	
Piers Forestier-Walker	Hudson	NY	United States	5/5/12	
R. O. Blechman	Ancram	NY	United States	4/11/12	
R. Wurlitzer	Hudson	NY	United States	5/5/12	
Rachel Sazone	Hudson	NY	United States	5/5/12	
Rae-ann Heinrich	Mellenville	NY	United States	4/8/12	
Rafael Webb	Mellenville	NY	United States	4/28/12	
Ralph Torjensen	Claverack	NY	United States	5/5/12	
Randy Correll	Claverack	NY	United States	4/17/12	As an architect I value our built environment and the story it tells about our culture, history and progress.
Rebecca Stowe	Craryville	NY	United States	4/5/12	
Rhonda Lieberman	Bronx	NY	United States	5/5/12	
Richard Currier	Stuyvesant	NY	United States	5/3/12	
Richard Ehrenberg	Marlboro	NY	United States	4/12/12	As the only known Whipple twin-span bowstring in the world, it would be a shame -- no, CRIME, really -- to NOT properly restore this bridge. It is a living piece of history, from a time when America's technical, engineering, and manufacturing prowess were just starting to bloom -- and Squire Whipple was at the forefront.
Richard VanDeusen	Claverack	NY	United States	5/5/12	
Rick Grad	Portland	OR	United States	4/18/12	
Rick McOmber	Rochester	MI	United States	4/10/12	HistoricBridges.org strongly supports the preservation and in-kind restoration of this nationally significant historic bridge.
Rick Rector	hudson	NY	United States	4/11/12	

## Help Preserve the Landmark Shaw Bridge in Claverack NY

Name	City	State	Country	Signed On	Comments
Rita Montone	New York	NY	United States	4/13/12	
Rob Mackenzie	Tweed Heads	NSW	Australia	4/19/12	As a retired civil engineer I can appreciate the need to retain & restore historic bridge structures - in the case of the Shaw Bridge, it appears unique, & unquestionably should be maintained.
Rob Nanamacher	Hudson	NY	United States	5/5/12	It's a one of a kind, how could we let it go.
Robert LaPorta	Claverack	NY	United States	4/10/12	
Robert Banks Jr.	Hudson	NY	United States	5/5/12	
Robert Burns	Staatsburg	NY	United States	4/3/12	
Robert C. Preusser	Craryville	NY	United States	4/12/12	Need to retain our heritage
Robert Laurie	Craryville	NY	United States	4/10/12	
Robert Rems	Claverack	NY	United States	4/28/12	
Robert Schroepel	Craryville	NY	United States	4/30/12	
Robin Andrews	Philmont	NY	United States	4/10/12	
Roderic Blackburn	Kinderhook	NY	United States	4/16/12	The Shaw Bridge (1870) is the only known surviving multi-span example of Whipple's bowstring truss. It was the first type of iron bridge extensively used in America.
Rose Taylor	Hudson	NY	United States	5/5/12	
Roseann Cane	Philmont	NY	United States	4/8/12	
Rosemary Palella	Troy	NY	United States	4/28/12	
Roy Boyce	Claverack	NY	United States	4/27/12	
Ruby Duke	E. Chatham	NY	United States	5/5/12	
Russell Pomeranz	Claverack	NY	United States	4/6/12	
Ruth Pinsky	Hudson	NY	United States	4/8/12	
S. McHoshish	Claverack	NY	United States	4/27/12	
Sally Baker	Philmont	NY	United States	4/8/12	To support the application for a Historic Structures Study - vital for the planning stage for restoring this lovely bridge. Thank you Ian for all the hard work you've put into this project and your passion to get it done!
Sally Brodsky	Ghent	NY	United States	4/8/12	
Salvatore Cozzolino	Claverack	NY	United States	4/6/12	
Sam Pratt	Taghkanic	NY	United States	4/11/12	
Sam Wright	Philmont	NY	United States	4/28/12	
Sara Griffen	LOUDONVILLE	NY	United States	4/10/12	
Sara Kendall	Hudson	NY	United States	5/5/12	
Sarah Chase	Hudson	NY	United States	5/5/12	This is very important!
Sarah Kleemann	Valatie	NY	United States	4/29/12	
Sarah Lipsky	Chatham	NY	United States	4/28/12	
Sarah Sterling	Hudson	NY	United States	5/5/12	
Scott DeLaurentis	Greenport	NY	United States	4/30/12	
Scott McKenney	Hollowville	NY	United States	4/8/12	
scott olsen	Kinderhook	NY	United States	4/21/12	
Scott Stackpole	Ancram	NY	United States	4/11/12	Recognizing and preserving this bridge and its design helps more people understand the links between past and present. Most things don't just happen; they develop from earlier thoughts and actions.
Selina Kiss	Copake	NY	United States	4/16/12	
serena vigliotti	carmel	NY	United States	4/14/12	
Shailer Evans	Claverack	NY	United States	4/9/12	
Shari Dorian	Heber City	UT	United States	4/18/12	
Sheila Metzner	Chatham Center	NY	United States	5/5/12	
Sheldon Evans	Ghent	NY	United States	4/16/12	
Shirley Ripullone	Hillsdale	NY	United States	5/6/12	
Solis Lujan	Santa Fe	NM	United States	4/8/12	
stan cipkowski	kinderhook	NY	United States	4/28/12	
Stanley Ackert	Claverack	NY	United States	4/28/12	
stella Yoon	Hudson	NY	United States	5/5/12	
Stephanie Sussman	Claverack	NY	United States	4/9/12	
Stephen Hook	Claverack	NY	United States	4/12/12	
Stephen King	claverack	NY	United States	4/7/12	
Stephen McKay	Hudson	NY	United States	5/5/12	
Steve Dobrowski	East Taghkanic	NY	United States	4/30/12	
Steven Pague	Claverack	NY	United States	4/10/12	
Stuart Thompson	Philmont	NY	United States	4/17/12	

## Help Preserve the Landmark Shaw Bridge in Claverack NY

Name	City	State	Country	Signed On	Comments
Sue & Henry Neale	Claverack	NY	United States	4/8/12	The Shaw Bridge is a long time family favorite. When our children were young we would go several miles out of our way to drive over the bridge. They christened it "Creaky Bridge" . I have been checking on it every few years and have been saddened by the deterioration.
Sue Rogers	Stockbridge	MA	United States	5/5/12	Community history worth restoring.
Susan Keeler	Claverack	NY	United States	5/5/12	We live on VanWyck Lane, we would love to have the bridge restored!
Susan Michie	philmont	NY	United States	4/19/12	
Susan Roberts	Hudson	NY	United States	4/19/12	
susan williams	craryville	NY	United States	4/17/12	
Susanne Whipple-Hagan	Dublin	GA	United States	4/18/12	
Tabitha Rex	Valatie	NY	United States	4/16/12	
Tad Higgins	Ancram	NY	United States	5/5/12	
Tammy Molinski	Livingston	NY	United States	4/28/12	
Tana Thompson Strome	Kinderhook	NY	United States	4/13/12	
Tanya Lofgren	Toronto	ONT	Canada	5/5/12	Historic bridges should be saved. They have great meaning to the people who live and have lived in the area.
Ted Hilscher	Hannocroix	NY	United States	5/5/12	
Ted Levenson	Hudson	NY	United States	4/28/12	
Terri Hover	Claverack	NY	United States	4/28/12	
Terry Schaff	Red Hook	NY	United States	5/5/12	
Theodore Filli	Claverack	NY	United States	4/29/12	
Theresa Preusser	Craryville	NY	United States	4/28/12	
Thomas Coyne	New York	NY	United States	4/8/12	
Thomas Montana	Colorado Springs	CO	United States	4/11/12	
Tim Benson	Claverack	NY	United States	4/20/12	Great project! I walked & rode my bike over the bridge many times in the late 30s, early 40s.
Tim Folmsbee	Claverack	NY	United States	5/5/12	
Tim Keeler	Claverack	NY	United States	5/5/12	
Timothy Dunleavy	Hudson	NY	United States	4/28/12	
Timothy Nitschke	Doncaster East	VIC	Australia	4/26/12	
Tom Buckner	Philmont	NY	United States	4/8/12	
TOM KEANE	Cstskill	NY	United States	4/21/12	
Tom Noonan	Hudson	NY	United States	4/28/12	
Tom Swope	Hudson	NY	United States	4/28/12	
Tony Santoro	Brooklyn	NY	United States	4/16/12	
tony stone	Hudson	NY	United States	4/28/12	
Trane Keil	Hudson	NY	United States	5/5/12	
Tristan Haistan	Hudson	NY	United States	5/5/12	
Veronica Mitchell	Claverack	NY	United States	4/30/12	
Vicki Rosenwald	Claverack	NY	United States	4/5/12	
Vicky Bailey	Ghent	NY	United States	5/5/12	An important piece of technological history!
Victor Mendolia	Hudson	NY	United States	5/5/12	
Victor Meyers	Greenport	NY	United States	5/5/12	
victoria brill	philmont	NY	United States	4/8/12	
Victoria Milne	Germantown	NY	United States	5/5/12	Save It!
vincent mulford	hudson	NY	United States	4/16/12	What a coincidence. I just discovered this sweet bridge today! Instead of being barricaded, cutting a neighborhood apart, it should be opened up. Even if only for walking and bikes this beautiful bridge allows neighbors to visit or walk to the restaurant. It ties a community together when functioning and this issue needs to be addressed. Thank you for making that happen.
Vincent Wallace	Claverack	NY	United States	4/30/12	
Virginia Martin	Stottville	NY	United States	4/8/12	
Virginia Tipple	Philmont	NY	United States	5/5/12	

## Help Preserve the Landmark Shaw Bridge in Claverack NY

[illegible]



The New York State Office of Parks and Recreation  
Taconic Park and Recreation Commission

THE TOWN OF CLAVERACK

Cordially invite you to a ceremony  
celebrating the listing of

THE SHAW BRIDGE

on the National Register of Historic Places

SATURDAY, SEPTEMBER 6, 1980

1 P.M.

Van Wyck Lane, Claverack, New York

R.S.V.P. (518) 851-9124 by August 30, 1980

(Rain date - Sunday, September 7, 1980 - 1 P.M.)



## Bridge ceremony planned

*The committee planning ceremonies marking the Shaw Bridge's listing in the National Register of Historic Places had an on-site meeting at the Claverack span Monday. Left to right are Ralph Williams, committee member; Mrs. Milton Thiessen, chairman of the Shaw Bridge celebration and town councilman; John Hess, Claverack supervisor; Mrs. Margaret Schram and Mrs. Gloria LaMont, committee members; and Richard Brady, Columbia County superintendent of highways. Also on the committee are Mrs. Florence Mossman, Claverack historian, and Allan Miller Jr. (cvm) (Register-Star photo by Robert Ragaini)*

**CLAVERACK** - A ceremony marking the listing of the Shaw Bridge here on the National Register of Historic Places will be held Sept. 6 at 1 p.m.

The event, which will take place at the bridge, is sponsored by the state Office of Parks and Recreation, the Taconic Park and Recreation Commission and the Town of Claverack.

The ceremony will include the presentation of the certificates to the town and the county denoting the bridge's register listing. The town owns the deck of the 110-year old bridge; the county, the structure.



Wednesday, August 20, 1980

# Ceremony to mark Shaw Bridge national listing

the bridge and the bridge and hurricanes of the last 40 years.

A free brochure will be distributed giving the history of the bridge and events that took place in Claverack the year of its construction.

A parade of antique cars and carriages from 1870-1930 and a display of antique farm equipment is planned. After construction of Rte. 9H in 1930, the Shaw Bridge no longer was on the major route from Albany to New York.

Town of Claverack residents, history buffs and persons interested in early engineering are invited to attend the ceremonies, which are free. Sept. 7 at 1 p.m. is the rain date.

The bridge, which spans the Claverack Creek, is the only

known example of a double span Whipple bowstring truss bridge still remaining.

The 1870 structure is considered of outstanding importance in the history of American engineering. Squire Whipple, its designer, was the first person to determine accurately the effects of stress on bridge design. After patenting his bowstring arch truss design in 1841, he became the nation's foremost theoretical designer of metal bridge.

As one of the best preserved Whipple patent bridges, it remains open to the light traffic along Van Wyck Lane, Claverack.

Mrs. Earl Schram, Jr., former Claverack town

historian who lives on Van Wyck Lane next to the bridge, spearheaded the drive to have the bridge listed in the National Register.

Impetus was added by Union College civil engineering students, who dismantled a Whipple bowstring arch truss design bridge spanning Cayadutta Creek in Johnstown and brought it back to the Schenectady campus for reconstruction as an historical landmark.

Among the Union students involved in the project was John Testa, a senior and a Copake resident.

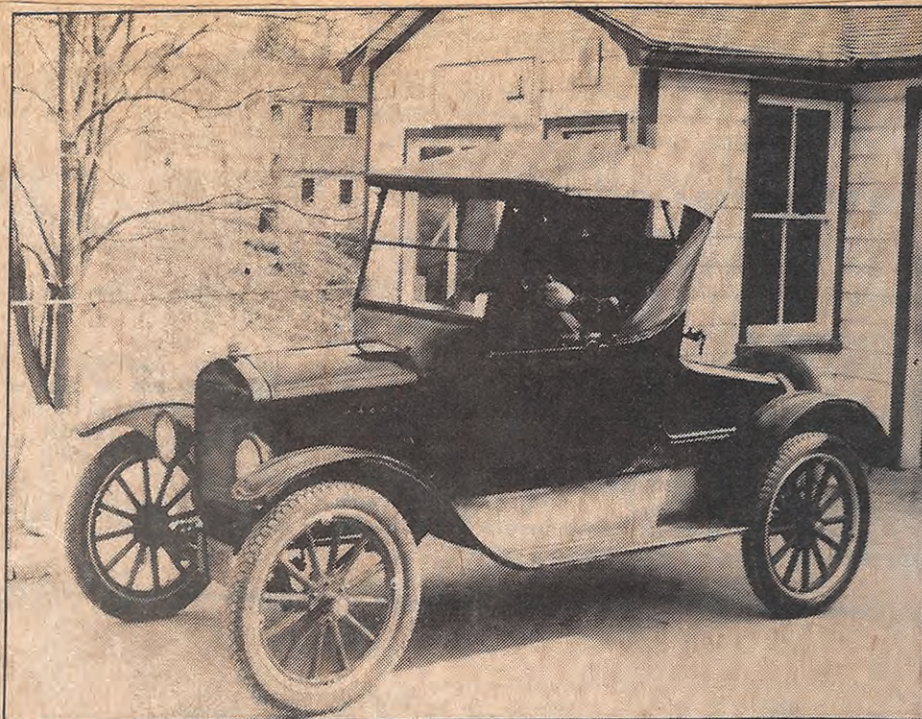
Whipple was a Union College alumnus. William P. Chamberlin of Schenectady, a student of New York State

bridges and a staff engineer with the state Department of Transportation, did the research on the Shaw span, the oldest dated iron bridge in the county.

The bridge also has been commended by Richard A. Brady, Columbia County highway commissioner and a Union College graduate. Whipple's camelback or bowstring bridge and its design still are studied by engineering students at Union and other engineering colleges.

The bridge is in excellent condition. Its metal trusses were newly painted a gunmetal gray, and the stone underpinnings are said to be as solid as they were in 1870. (cvm)





## Bridging the decades

*This 1923 Ford Runabout Model T driven by Benjamin Mesick of Mellenville will be among the antique cars in Claverack Saturday for a ceremony marking the naming of the Shaw Bridge on Van Wyck Lane to the National Register of Historic Places. (cvm)*

# Antique car parade slated for Shaw Bridge ceremony

CLAVERRACK — A parade of an antique horse drawn buckboard and antique cars will begin the ceremony for the Shaw Bridge, Van Wyck Lane, which has just been placed on the National Register.

The parade commemorates the use of the Shaw Bridge as a part of the Post Road until 1931.

The celebration Saturday, at 1 p.m. will also include a display of early farm equipment. Rain date is Sunday.

John Hess, Claverack supervisor, will be master of ceremonies for the event, which will be held on a field near the bridge. The Revs. George and Caroline Mendis of the St. John-St. Thomas Lutheran parish, Hudson and Churchtown will offer prayers at the start and end of the ceremony.

Larry Gobrecht, National Register and survey coordinator for the state Division for Historical Preservation, will speak on the importance of the listing in the National Register of Historic Places. Gobrecht also will present a certificate of listing to Richard Brady, Columbia County highway commissioner.

Squire Whipple, who patented the cast and wrought iron arch-truss bridge design, was a graduate of Union College, Schenectady, class of 1830.

Brady, Union College class of 1954, will speak on the engineering of the Shaw Bridge, which was built using the Whipple patent.

Paul R. Montana, a commissioner of the Taconic State Park and Recreation Commission, will present the citation designating the bridge as an historic structure to the Town of Claverack. Ralph Williams, chairman of the Columbia County Planning Board, will recount the role of the Bridge in the 1938 hurricane, and some of the problems in the county in that hurricane and the severe storms of 1954.

Free brochures will be available to persons attending the ceremony. A printed souvenir pamphlet on the Shaw Bridge and its history will be distributed by the members of the committee.

The newly-formed Town of Claverack Historical Society will give out a printed listing of the national and local events that took place in 1870, the year that the bridge was constructed. The research for the brochure was compiled by Mrs. Florence Mossman, town historian for Claverack.

Hess invited residents of the town to attend the free event, sponsored by the town, the

Taconic Park and Recreation Commission and the state Office of Parks and Recreation.

"This historic bridge is a source of pride for Claverack Township," said Supervisor Hess.

In a letter from Donald C. Jackson, acting chief of the Historic American Engineering Record published by the U.S. Department of the Interior, Jackson writes "The Shaw Bridge is among the finest surviving structures built in accordance with Squire Whipple's patent of the early 1840s and it comprises a superb monument commemorating his great contribution to 19th century American Bridge building." Jackson also extended thanks to the people of Claverack for their work in preserving the structure.

Persons interested in history or early engineering are also invited. Parking along Van Wyck Lane will be assisted by the Philmont-Mellenville Jaycees. Persons needing chairs for the 45-minute ceremony are asked to bring their own.

Information may be obtained from committee members Mrs. Milton Thiessen, chairman; Hess; Brady; Williams; Mrs. Mossman; Allen Miller, Jr.; Mrs. Gloria La Mont; Mrs. Margaret Schram. (cvm)



# Ceremony marks Shaw Bridge listing

CLAVERRACK - A horse-drawn buckboard led a parade of antique cars across the Shaw Bridge on Van Wyck Lane here Saturday.

The occasion marked the town's celebration of the bridge's listing in the National Register of Historic Places.

About 150 persons attended the affair, including several alumni of Union College, Schenectady. Squire Whipple, who patented the cast and wrought iron arch-truss bridge design, was a graduate of Union's class of 1830. Richard Brady, Columbia County highway commissioner and another Union alumnus, spoke about the unique aspects of the span's design.

Claverack Supervisor John Hess opened the program with a welcome, and introduced the drivers. Mr. and Mrs. John Mahon of Martindale drove the buckboard.

Charles Rundell of Spencertown rode his 1922 Essex Speedster; Edward Barden, Spencertown, a 1923 Studebaker; Ben Mesick of Mellenville, a 1924 Ford; Charles Nichols, Philmont, 1922 white truck; Tim Cantele, Mellenville, 1929 Ford truck; and Len Winters, a 1930 Ford truck owned by Stanley Voorhees.

Larry Gobrecht, National Register and survey coordinator for the state Division for Historic Preservation, presented to Brady the certificate designating the bridge to the Register to Brady.

Paul Montana, a member of

the Taconic State Park and Recreation Commission, presented a citation designating the bridge an historic structure to Supervisor Hess.

Ralph Williams of Claverack, chairman of the county Planning Board and formerly with the Columbia County Highway Department, spoke on how the Shaw Bridge was used during floods in the 1930s and 1950s.

Pamphlets describing the bridge, the only known example of a double span Whipple bowstring truss bridge, and a listing of national and local events that took place in 1870, the year the bridge was constructed, were distributed.

Research for the latter was compiled by Mrs. Florence Mossman, Claverack historian and temporary chairman of the new Town of Claverack Historical Society. The Society signed up many new members.

Prayers were offered by the Revs. George and Caroline Mendis, pastors of St. John's-St. Thomas' Lutheran Parish of Hudson and Churchtown.

Claverack Boy Scouts from Troop 121 led the Pledge of Allegiance. Participating were Bill Hilscher, Chris Konow,

Chris and Ed Coons.

Supervisor Hess introduced the honored guests: State Sen. Joseph Bruno, Assemblyman Clarence D. Lane; James Ryan, Olana State Historic Site manager; Kathy LaFrank, of the state Historic Preservation Office of Parks and Recreation, who assisted Mrs. Margaret Schram of Claverack with the project; and William P. Chamberlin, staff engineer for the state Department of Transportation, who did the engineering studies for the National Register.

Also introduced was state engineer A. G. Lichtenstein, who termed the span a "sensitive resource that should be preserved."

Norman and Robert Stitham and James Weisner of the Greater Philmont-Mellenville Area Jaycees, helped with the parking.

Hildebrandt Trucking of Claverack loaned the flat-bed used in the ceremony, staged on the grounds of the Schram home near the bridge.

Milton Stickles demonstrated his Hardie sprayer and apple packing equipment and distributed free apples. (cvm)



## Historic moment

Richard Brady, left, Columbia County highway commissioner, receives the certificate designating Claverack's Shaw Bridge to the National Register of Historic Places from Larry Gobrecht, National Register and survey coordinator for the state Division for Historic Preservation, at ceremonies near the Van Wyck Lane span Saturday. (cvm) (Register Star photo by Harry B. Halaco)

## October 2013 Claverack Historic Preservation Advisory Committee Report

The Claverack Historic Preservation Committee (CHPAC) met 7 PM on Friday October 4, 2013 at the Town Hall. The meeting was attended by Andreas Sagaty, Tim Smith, Nick Zasorin, and Ian Nitschke.

The main topic of discussion was the “Shaw Bridge Historic Structure Report.”

The cover photo of the report is from a vintage postcard that Ian purchased on eBay (at the suggestion of Sal), which contains important information including the date (1906-1909) and original details of the deck when the bridge was less than 40 years old – long before the modern guide rails were installed.



A tremendous amount of work has been done on this report involving many people, notably the two contractors Dr. Francis Griggs and Ryan Biggs as well as by members of the committee: Sal Cozzolino, Jeane and Bob La Porta, Dianna McCarthy, Andreas Sagaty, Tim Smith, and Nick Zasorin.

- Squire Whipple Section – Initial draft by Dianna.
- J. D. Hutchinson Section – Initial draft by Jeane.
- William Shaw Section – Initial material by Sal.
- Shaw Bridge & Post Road History – Initial material by Bob and Andreas.

For each section, the initial draft was edited by Ian who also provided illustrations and added material notably from Peter Stott (author of the book “Looking for Work”), retired NYSDOT historian William P. Chamberlin, and a wealth of information in the Columbia County Department of Engineering files.

Ian met with Erin Tobin at the Preservation League in Albany on September 18 and went through each section with her including the two exhibits by the consultants Dr. Griggs and Ryan Biggs paid for by the League. She seemed pleased with the report.

Although much work has been done, some work is still required by volunteers to complete the report including the Report Summary, which Erin said was not urgent and could be postponed for a few months, if needed. Ian will take the lead on this.

There was also a discussion about the Albany Post Road. Andreas volunteered to do some more research on the location of the Post Road through Claverack in 1870 and the history of the road (and other roads) before and after 1870. The idea is to provide a bicycle/foot path link to other historical sites in Claverack.



**CHRIS GIBSON**

19th District, New York

1708 Longworth Building  
Washington, DC 20515  
(202) 225-5614

<http://gibson.house.gov>



**Congress of the United States**  
**House of Representatives**  
**Washington, DC 20515**

**HOUSE AGRICULTURE COMMITTEE**

Subcommittee on General Farm  
Commodities and Risk Management

Subcommittee on Livestock,  
Rural Development, and Credit

**HOUSE ARMED SERVICES COMMITTEE**

Subcommittee on Tactical Air and  
Land Forces

Subcommittee on Intelligence,  
Emerging Threats, and Capabilities

Subcommittee on Military Personnel

June 9, 2014

Danielle Dwyer  
Regional Grant Administrator for the Capital Region  
Office of Parks, Recreation & Historic Preservation  
Saratoga Spa State Park  
19 Roosevelt Drive  
Saratoga Springs, NY 12866-6214

Dear Ms. Dwyer:

I am writing to express my support for the request for funding being submitted by the Town of Claverack through the New York State Consolidated Funding Application process for Phase I of the restoration for the 1870 Shaw Bridge.

The Shaw Bridge is described in the National Register of Historic Places as "A structure of outstanding importance to the history of American engineering and transportation technology." The bridge employs the basic design of 1830 Union College Graduate, Squire Whipple, who has been called the "Father of Iron Bridges." The Shaw Bridge is the only existing extant double-span Whipple bowstring truss bridge in the United States, and stands in its original location along the historic New York to Albany Post Road.

There is significant interest and support for the restoration of this bridge from a broad cross-section of citizens of the town, including the homeowners who live closest to the bridge. This Town of Claverack has already helped in the clean-up of vegetation on the bridge and is willing to work with interested parties and citizens in future efforts to restore the Shaw Bridge as a historic site within the town.

Thank you for your consideration of this worthy proposal. Please notify my office of your decision regarding this application. You may direct your response to PO Box 775, Kinderhook, NY 12106 or by fax to 518-610-8135. If you have any questions please call my office at 518-610-8133.

Sincerely,

Chris Gibson  
Member of Congress

CPG/rh



DIDI BARRETT  
Assembly member 106<sup>th</sup> District

THE ASSEMBLY  
STATE OF NEW YORK  
ALBANY

CHAIR  
Subcommittee on Outreach  
and Oversight of Senior  
Citizen Programs

COMMITTEES  
Aging  
Agriculture  
Economic Development, Job  
Creation and Industry  
Mental Health  
Tourism  
Veterans' Affairs

LEGISLATIVE CAUCUSES  
Legislative Women's Caucus

June 10, 2014

Danielle Dwyer  
Regional Grant Administrator for the Capital Region  
Office of Parks, Recreation & Historic Preservation  
Saratoga Spa State Park  
19 Roosevelt Drive  
Saratoga Springs, NY 12866-6214

Dear Ms. Dwyer

I am writing this letter to express my support for the Town of Claverack's Consolidated Funding Application (CFA) for funds to implement the Shaw Bridge Restoration Project for the 1870 Shaw Bridge in the Town of Claverack, NY. The Shaw Bridge is described in the National Register of Historic Places as "a structure of outstanding importance to the history of American engineering and transportation technology." Squire Whipple, an 1830 Union College graduate who was known as the "Father of Iron Bridges," is responsible for the historic bridge's basic design. It stands as the only extant double-span Whipple bowstring truss bridge in the entire country and, remarkably, remains in its original location along the historic New York to Albany Post Road.

Much support and interest has been generated for the restoration of this bridge from a broad coalition of town residents, including homeowners who live closest to the bridge. The chance to repurpose the bridge for the benefit of the community is an exciting opportunity to preserve a structure that is nationally and internationally renowned for its historic status. Importantly, if this proposal is approved, the Town of Claverack will be able to commence plans to turn the bridge into a pedestrian walkway with significant potential as a tourist attraction in Columbia County.

Thank you for your consideration of this worthy proposal. If I can be of any other assistance, please don't hesitate to contact me.

Sincerely,

Didi Barrett  
Member of Assembly, 106th District





June 3, 2014

Danielle Dwyer  
Regional Grant Administrator for the Capital Region  
Office of Parks, Recreation & Historic Preservation  
Saratoga Spa State Park  
19 Roosevelt Drive  
Saratoga Springs, NY 12866-6214

Board of Trustees

Deborah E. Lans  
*Chair*

Melanie Brandston  
*Vice Chair*

Sheldon Evans  
*Vice Chair*

Leah J. Wilcox  
*Vice Chair*

Mark A. Levy  
*Treasurer*

Joan R. Snyder  
*Secretary*

Amy Barr  
Chris C. Cashen  
Hilary Dunne Ferrone  
Tony Jones  
Eric Lane  
Howland D. Murphy  
Scott Newman  
Bruce Pinkernell MD  
Michael Polemis  
Barbara Reisman  
Charles Tauber  
Henry Tepper

Peter R. Paden  
*Executive Director*

Dear Ms. Dwyer:

I am writing in support of the Town of Claverack's Consolidated Funding Application (CFA) for funds to restore the 1870 Shaw Bridge in the Town of Claverack. The Columbia Land Conservancy works with communities to conserve the farmland, forests, wildlife habitat and rural character of Columbia County, strengthening connections between people and the land. As such, we applaud and are eager to support the efforts of communities throughout the county to preserve the rich historical heritage that characterizes our area. This is one such project.

I understand that the Shaw Bridge is described in the National Register of Historic Places as "a structure of outstanding importance to the history of American engineering and transportation technology;" that it is a prime example of the work of a seminal 19th Century structural engineer; and that it is a unique example in several respects.

I am also informed that there is significant interest and support for the restoration of this bridge from a broad cross-section of citizens of the town, including the homeowners who live closest to the bridge. The Town of Claverack has already helped in the clean-up of vegetation on the bridge and is willing to work with the interested parties and citizens in future efforts to restore the Shaw Bridge as a historic site within the town. Approval of funds for this project will set into place a community effort to make the bridge a pedestrian walkway and a Columbia County tourist attraction.

Moreover, as I have discussed with Ian Nitschke, Chair of the Claverack Historic Preservation Advisory Committee, there is potential for wonderful water, foot and bicycle trails in the immediate vicinity of the Shaw Bridge, and the successful restoration of the bridge could serve as a catalyst to inspire the development of one or more such important tourist and recreational amenities in the future.

Your support will ensure that future generations will be able to enjoy the elegant beauty of this unique engineering piece of art.

Thank you for your consideration of this worthy proposal.

Sincerely,

Peter R. Paden  
Executive Director

cc: Claverack Town Board

*conserving rural landscapes—connecting people to the land*



# Columbia County Department of Public Works

David S. Robinson, PE - Commissioner of Public Works

PO Box 324 - 178 Route 23B, Hudson, New York 12534  
HIGHWAY • SOLID WASTE • ENGINEERING

---

June 12, 2014

Danielle Dwyer  
Regional Grant Administrator for the Capital Region  
Office of Parks, Recreation & Historic Preservation  
Saratoga Spa State Park  
19 Roosevelt Drive  
Saratoga Springs, NY 12866-6214

**RE: TOWN OF CLAVERACK  
CONSOLIDATED FUNDING APPLICATION**

Dear Ms. Dwyer:

I am writing in support of the Town of Claverack's Consolidated Funding Application (CFA) to preserve and restore the 1870 Shaw Bridge in the Town of Claverack.

The Shaw Bridge, which is one of the only double bowstring arch whipple truss bridges in existence, represents one of only six historic bridges in Columbia County. What makes the Shaw Bridge particularly interesting and worth preserving is not only the fact that it is a one-of-a-kind structure representative of 19<sup>th</sup> century civil engineering, but also the fact that the bridge was developed by Squire Whipple, a civil engineer who graduated from Union College and became renown for his work and patents with iron truss bridges. Folklore also suggests that this particular bridge may have been forged and manufactured in Troy, NY with many of its original parts still remaining.

I am particularly pleased to see the outpouring of support by residents of the Town of Claverack for the preservation and restoration of this important civil engineering landmark. The Columbia County Department of Public Works wholeheartedly supports this CFA application.

Very truly yours,

**COLUMBIA COUNTY  
DEPARTMENT OF PUBLIC WORKS**

A handwritten signature in dark ink, appearing to read "David S. Robinson".

David S. Robinson, P.E.  
Commissioner

Cc: Clifford Weigelt

---

**Highway Division**  
**Bernard Kelleher – Director**  
PO Box 324 – 178 NYS Rt. 23B  
Hudson, NY 12534  
(518) 828-1114  
(518) 828-8740 FAX

**Solid Waste Division**  
**Jolene Race – Director**  
401 State Street  
Hudson, NY 12534  
(518) 828-2737  
(518) 828-2245 FAX

**Engineering Division**  
**Dean Knox – Director**  
PO Box 324 – NYS Rt. 23B  
Hudson, NY 12534  
(518) 828-7011  
(518) 828-8401 FAX

ReEntry Columbia  
52 Green Street  
Hudson, NY 12534

June 13, 2014

Danielle Dwyer  
Regional Grant Administrator for the Capital Region  
Office of Parks, Recreation & Historic Preservation  
Saratoga Spa State Park  
19 Roosevelt Drive  
Saratoga Springs, NY 12866-6214

Dear Danielle,

I am writing in support of the Town of Claverack's Consolidated Funding Application (CFA) to restore the historic 1870 Shaw Bridge in the Town of Claverack.

ReEntry Columbia is eager to participate in this project as it would be a great benefit for some of our clients to work with Timothy Smith who would be supervising the masonry restoration aspects of the project. We have had clients who worked with Timothy in the past and he has been a strong mentor to these returning citizens.

We are an agency supporting the transition back into the community for those who have been incarcerated whether in county jail or state prison. Our mission is to provide support and guidance toward employment, housing and reintegration into the community. Currently we receive funding from Columbia County Board of Supervisors along with some private grants. Employment and skill development opportunities are especially important for successful reentry.

One of our clients is Franklyn Ammie, who has a history of drug abuse and drug related crime. While working with Tim, Franklyn was learning a valuable trade along with life skills that will help him to manage his life in a more constructive way. Franklyn is looking forward to the possibility of working with Tim Smith again and continuing to develop productive skills.

ReEntry Columbia sees the restoration of this historic bridge as an important project for our county as well as great opportunity for some of our clients, who struggle to find meaningful work. Our organization looks forward to working together with other community organizations to see this to successful completion.

Thank you for your consideration of this worthy proposal.

Sincerely,



Carolyn Polikarpus

carolyn polikarpus | program director | Reentry Columbia | 518 821 3773



June 13, 2014

Danielle Dwyer  
Regional Grant Administrator for the Capital Region  
Office of Parks, Recreation & Historic Preservation  
Saratoga Spa State Park  
19 Roosevelt Drive  
Saratoga Springs, NY 12866-6214

Dear Danielle,

I am writing in support of the Town of Claverack's Consolidated Funding Application (CFA) to restore the historic 1870 Shaw Bridge in the Town of Claverack.

I also want to assure you that the Greater Hudson Promise Neighborhood would very much like to participate in this worthy project by having some of our local youth and community members assigned to Timothy Smith who would be supervising the masonry restoration aspects of the project. We have worked with Timothy in the past and he is an exceptional mentor to these students having a difficult time.

Tim has mentored many at-risk youth from the greater Hudson area through learning a trade and has assisted them in entering the workforce.

You can be sure that Greater Hudson Promise Neighborhood will cooperate and fully support the restoration of this internationally recognized historic bridge with our program to the mutual benefit to our clients and the Town of Claverack.

Thank you for your consideration of this worthy proposal.

Sincerely,

*Joan E. Hunt*

Joan Hunt  
Director  
Greater Hudson Promise Neighborhood





Howard P. Milstein  
Chairman

Thomas J. Madison, Jr.  
Executive Director

**New York State Thruway Authority**  
**New York State Canal Corporation**

[www.canals.ny.gov](http://www.canals.ny.gov)



Brian U. Stratton  
Director

June 13, 2014

Danielle Dwyer  
Regional Grant Administrator for the Capital Region  
Office of Parks, Recreation & Historic Preservation  
Saratoga Spa State Park  
19 Roosevelt Drive  
Saratoga Springs, NY 12866-6214

Dear Ms. Dwyer:

I am writing in support of the Town of Claverack's Consolidated Funding Application (CFA) for funds to restore the 1870 Shaw Bridge in the Town of Claverack.

The Shaw Bridge is described in the National Register of Historic Places as "a structure of outstanding importance to the history of American engineering and transportation technology." It closely follows the design that was patented in 1841 by 1830 Union College graduate, Squire Whipple (1801-88), recognized worldwide as the person who first correctly analyzed the stresses in a truss and put those ideas into print in his revolutionary 1847 book *A Work on Bridge Building*. Although many hundreds of Whipple Bow String Truss Bridges once crossed the enlarged Erie Canal, only a handful remain and the Shaw Bridge is the only extant double-span bridge of its kind and the only one in its original location.

I understand that Dr. Francis Griggs will be supervising the restoration of the Shaw Bridge. Among several bridge restoration projects, Dr. Griggs led the extraordinary effort to move a 1869 Whipple Bridge from Fonda, New York to the Vischer Ferry Nature and Historic Preserve in Clifton Park, New York, where it has become a major tourist attraction. In that project, he was able to do a remarkable job of collaborating the efforts of students and friends of Union College with private contractors and suppliers, so that the job was carried out without state, federal, or town funding. With Dr. Griggs leading the effort, the restoration will be in very capable hands.

Thank you for your consideration of this worthy proposal.

Sincerely,

Brian Stratton  
Director

cc: Claverack Town Board

